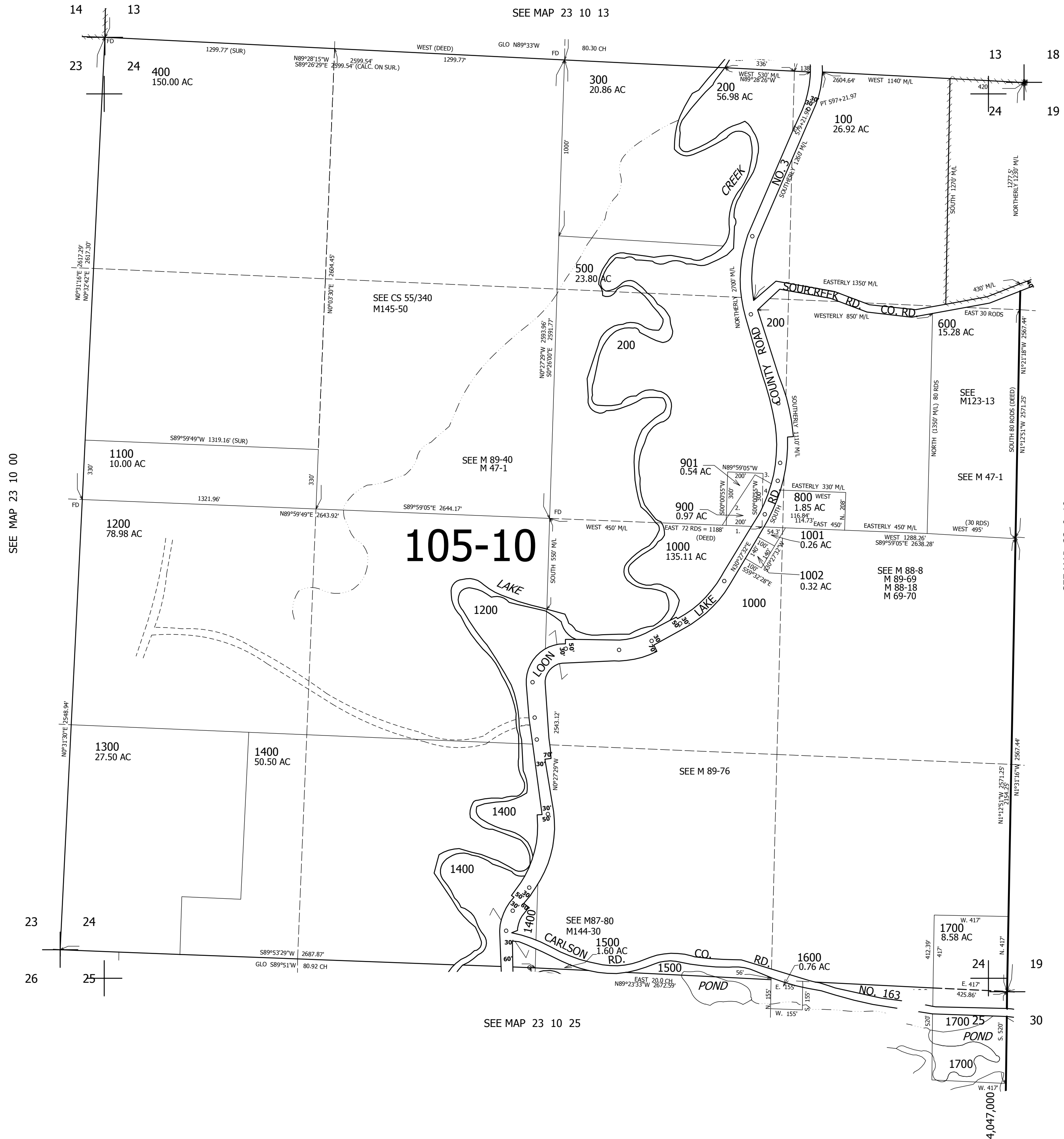


THIS MAP WAS PREPARED FOR ASSESSMENT PURPOSE ONLY.

SEC. 24 T.23S. R.10W. W.M.
DOUGLAS COUNTY
1" = 400'

REVISED ON
11-21-11

23 10 24



CANCELLED NOS
700 101 201
202 1002A1

PARCELS 900 & 201

- 1. N89°59'05\"E 165.9'
- 2. N31°07'08\"E 341.27'
- 3. S58°52'52\"E 142.05'
- 4. S31°07'08\"W 255.57'

SEE MAP 23 9 19

702,000

23 10 24

SEE MAP 23 10 25

SEE MAP 23 10 00

4,047,000