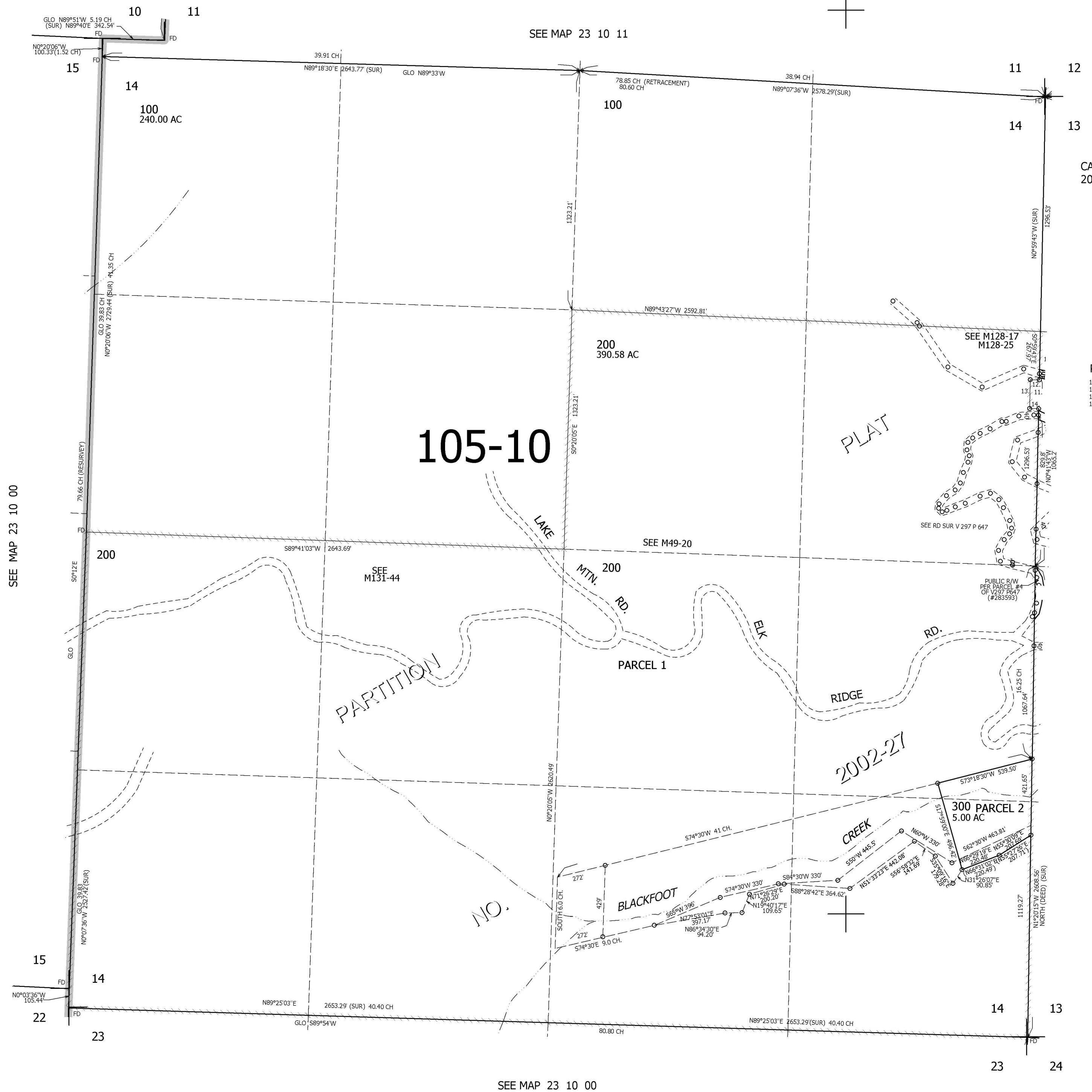
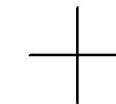
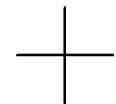


THIS MAP WAS PREPARED FOR ASSESSMENT PURPOSE ONLY.

SEC. 14 T.23S. R.10W. W.M.
DOUGLAS COUNTY
1" = 400'

REVISED ON
7-2-02

23 10 14



CANCELLED NOS
201

PARCEL 200
11. N0°59'43"W 159.42'
12. S89°00'17"W 50'
13. S0°59'43"E 159.42'
14. N89°00'17"E 50'

SEE MAP 23 10 13

708,000

SEE MAP 23 10 00

4,036,000

23 10 14