

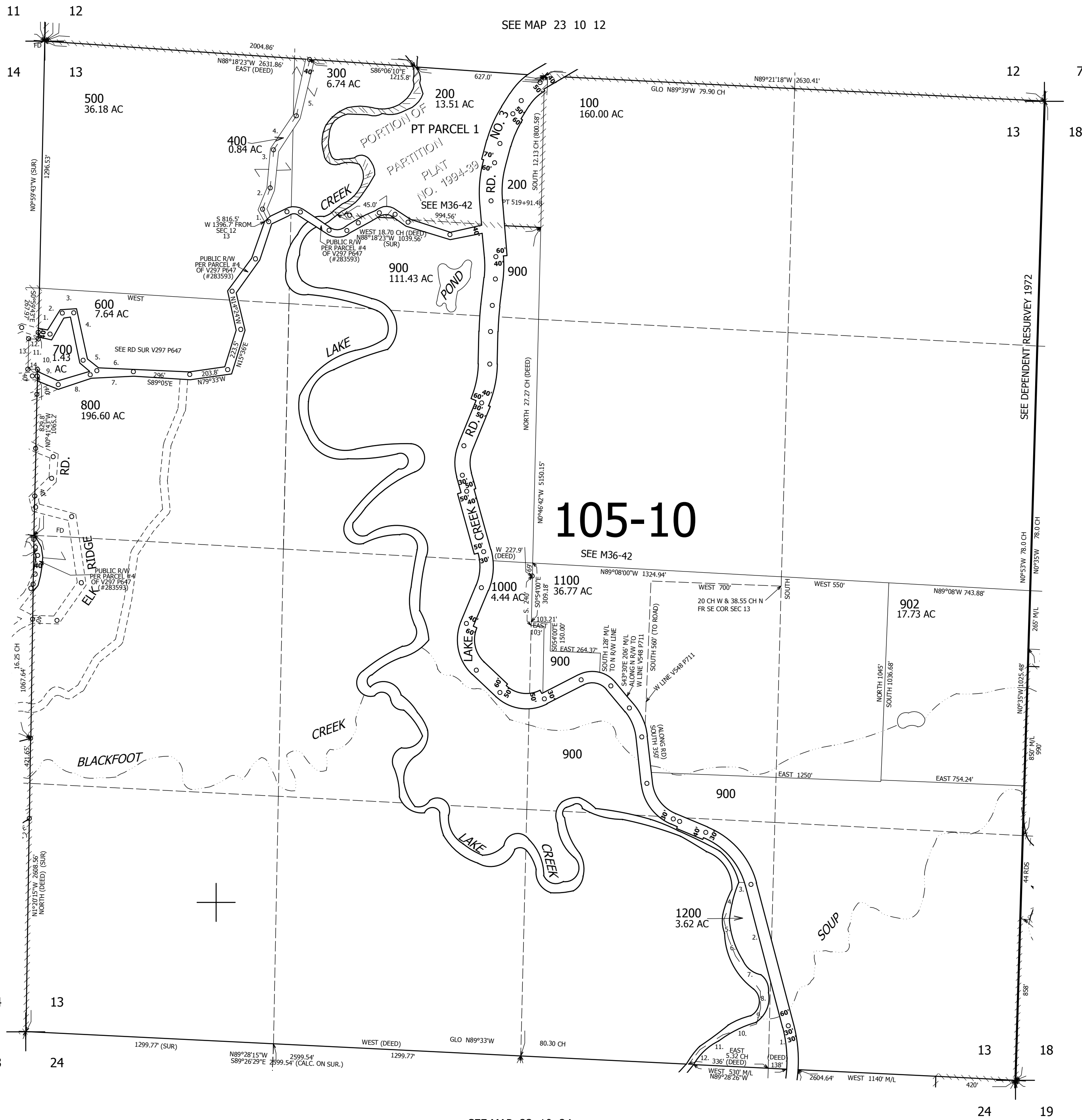
THIS MAP WAS PREPARED FOR ASSESSMENT PURPOSE ONLY.

SEC. 13 T.23S. R.10W. W.M. DOUGLAS COUNTY

REVISED ON 5/26/15

23 10 13

1" = 400'



- PARCEL 400**
1. N35°23'W 71.8'
 2. N19°58'E 118.4'
 3. N3°05'E 201.1'
 4. N30°55'E 216'
 5. N11°13'E 306.8'

- PARCEL 700**
1. S76°16'E 69.4'
 2. N27°45'E 127.3'
 3. N81°45'E 61.2'
 4. S13°15'E 255.3'
 5. S52°49'E 93.1'
 6. N89°21'E 193.1'
 7. S84°09'W 228.7'
 8. S70°03'W 173.5'
 9. N69°52'W 127.4'
 10. NORTH ALONG SECTION LINE
 11. N0°59'43'W 159.42'
 12. S89°00'17'W 50'
 13. S0°59'43'E 159.42'
 14. N89°00'17'E 50'

CANCELLED NOS 901 903

SEE MAP 23 9 18

- PARCEL 1200**
1. N8°15'W 402'
 2. N17°W 600'
 3. WEST 30'
 4. N19°30'W 212'
 5. N16°E 100'
 6. S24°E 100'
 7. S37°30'E 227'
 8. S3°E 90'
 9. S12°W 85'
 10. S70°W 186'
 11. S55°W 143'
 12. S36°W 72'

708,000

SEE MAP 23 10 24

4,043,000

23 10 13