

THIS MAP WAS PREPARED FOR ASSESSMENT PURPOSE ONLY.

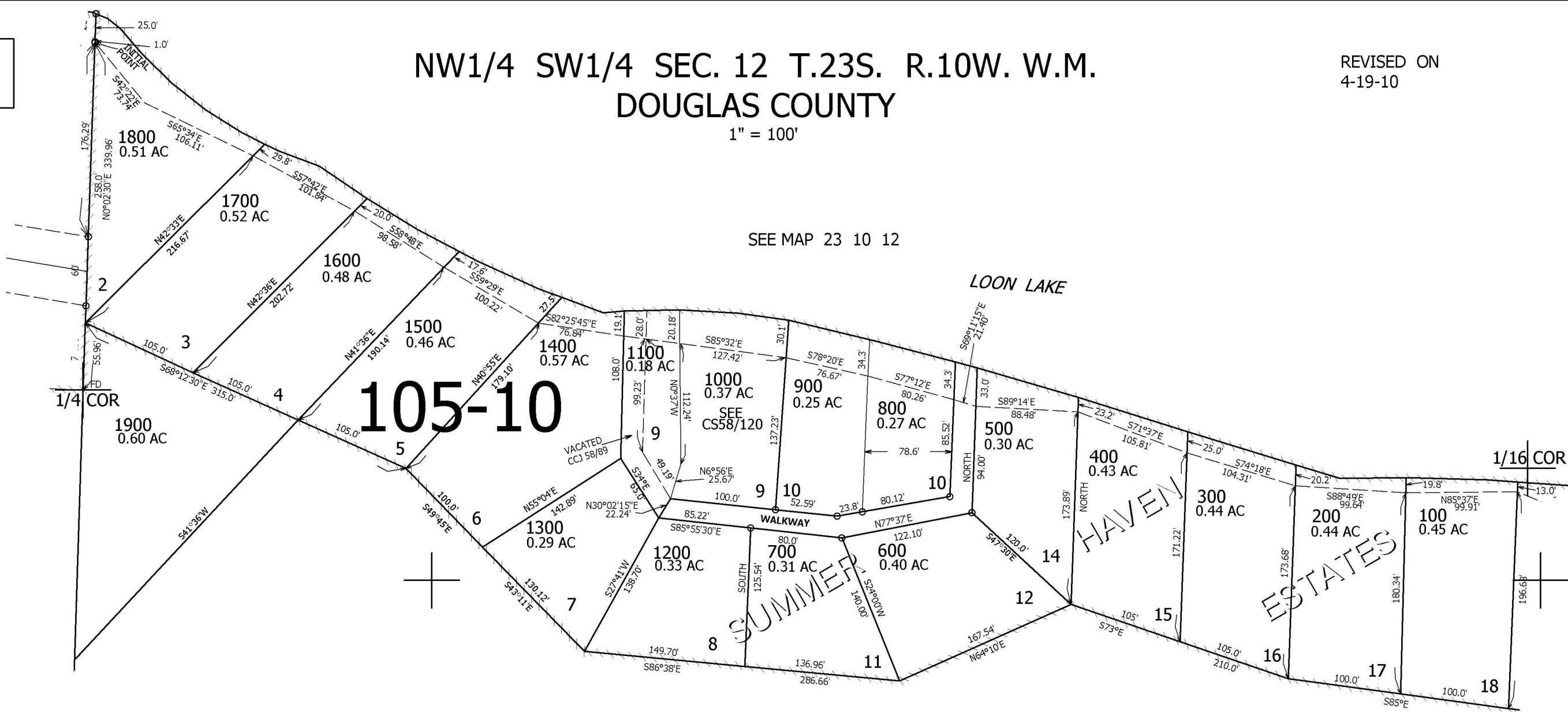
# NW1/4 SW1/4 SEC. 12 T.23S. R.10W. W.M. DOUGLAS COUNTY

REVISED ON  
4-19-10

23 10 12CB

1" = 100'

SEE MAP 23 10 11AD



1/16 COR

714,000

1/16 COR

4,038,500

23 10 12CB