

THIS MAP WAS PREPARED FOR ASSESSMENT PURPOSE ONLY.

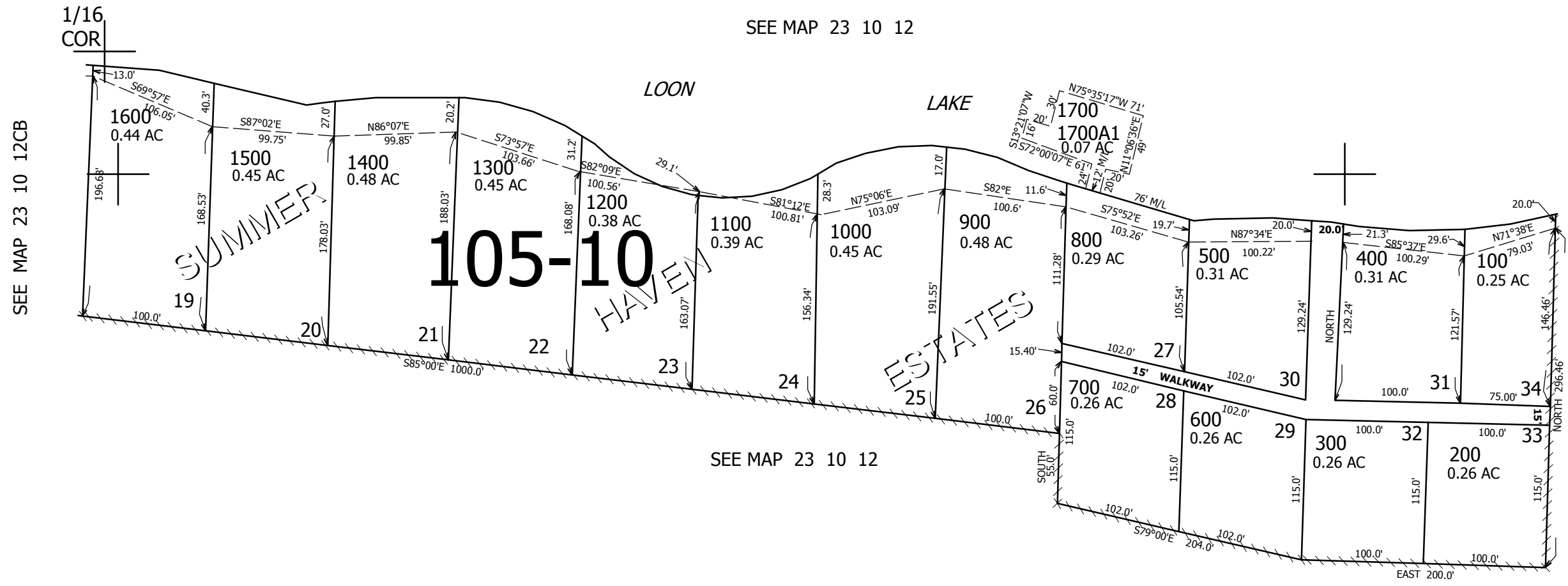
NE1/4 SW1/4 SEC. 12 T.23S. R.10W. W.M. DOUGLAS COUNTY

REVISED ON 3-4-19

23 10 12CA

1" = 100'

SEE MAP 23 10 12



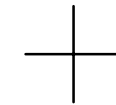
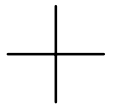
SEE MAP 23 10 12CB

SEE MAP 23 10 12

SEE MAP 23 10 12

CEN SEC

CANCELLED NOS



714,000

1/16 COR

1/16 COR

4,039,500

23 10 12CA