

THIS MAP WAS PREPARED FOR ASSESSMENT PURPOSE ONLY.

SE1/4 NE1/4 SEC. 11 T.23S. R.10W. W.M.
DOUGLAS COUNTY

REVISED ON
11-20-08

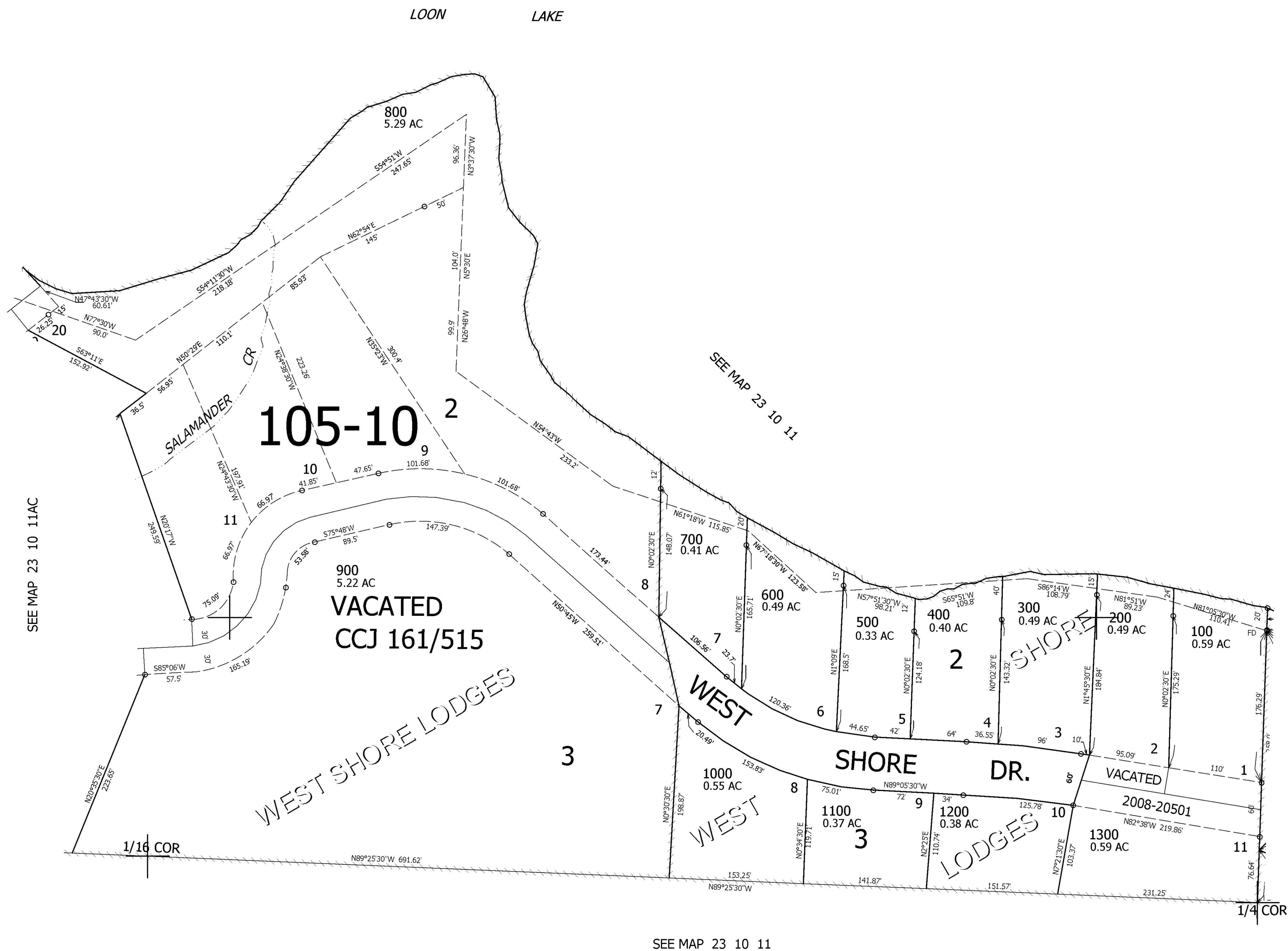
23 10 11AD

1" = 100'

1/16 COR

1/16 COR

CANCELLED NOS



715,500

SEE MAP 23 10 12CB

SEE MAP 23 10 11

4,037,000

23 10 11AD