

THIS MAP WAS PREPARED FOR  
ASSESSMENT PURPOSE ONLY.

SW1/4 NE1/4 SEC. 11 T.23S. R.10W. W.M.  
DOUGLAS COUNTY  
1" = 100'

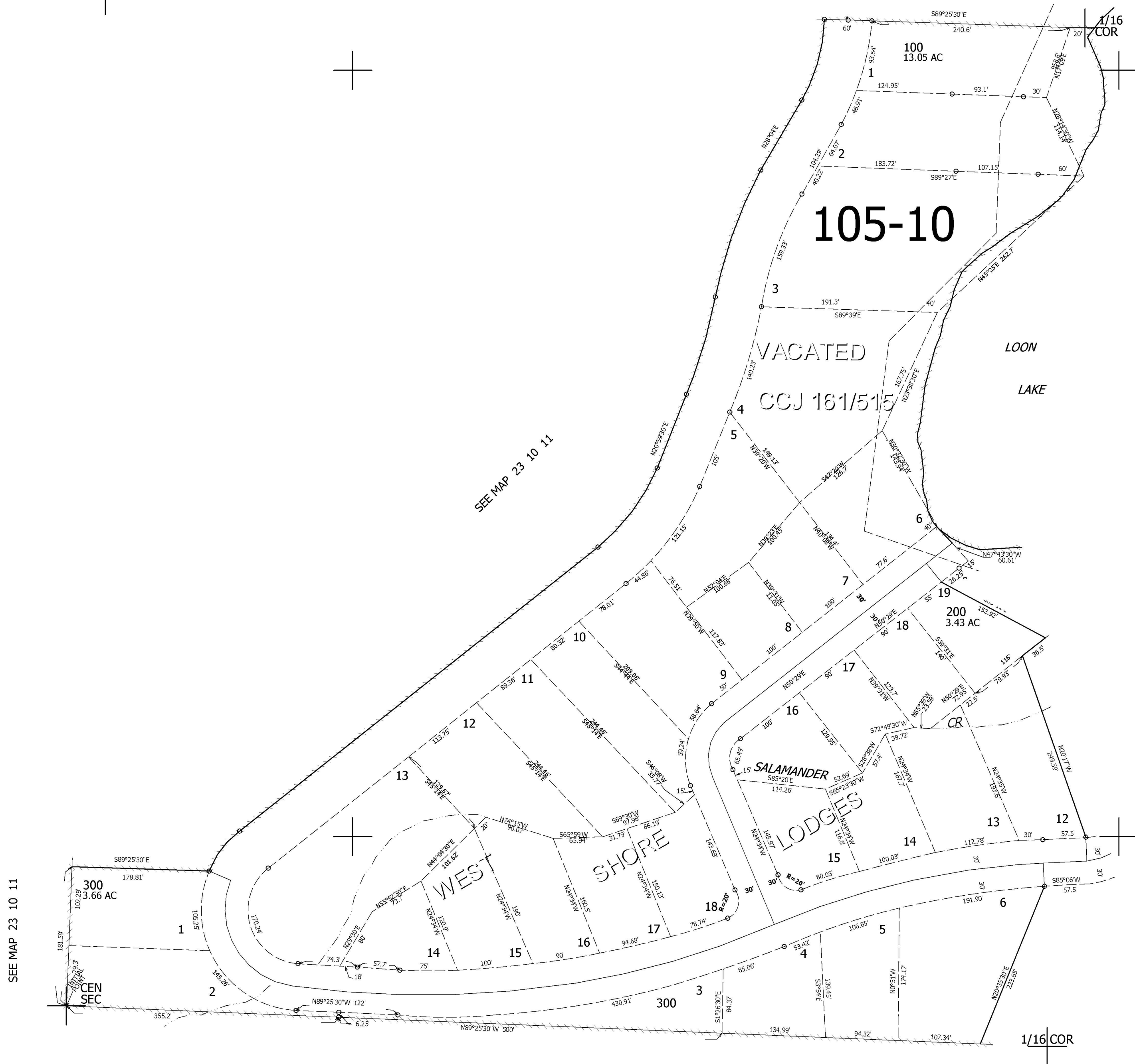
REVISED ON  
3-27-95

23 10 11AC

1/16 COR

SEE MAP 23 10 11

CANCELLED NOS



SEE MAP 23 10 11AD

715,500

SEE MAP 23 10 11

SEE MAP 23 10 11

4,036,000

23 10 11AC