

THIS MAP WAS PREPARED FOR ASSESSMENT PURPOSE ONLY.

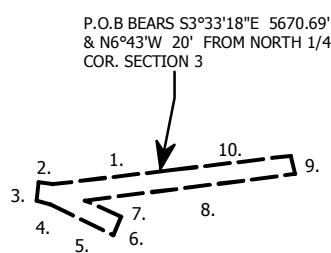
T.23S. R.10W. W.M. DOUGLAS COUNTY 1" = 2000'

REVISED ON 3-30-11

23 10 00 & INDEX

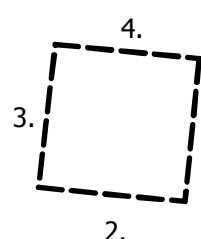
CANCELLED NOS 1200M1 1200M2 400A1

DETAIL 1" = 400'



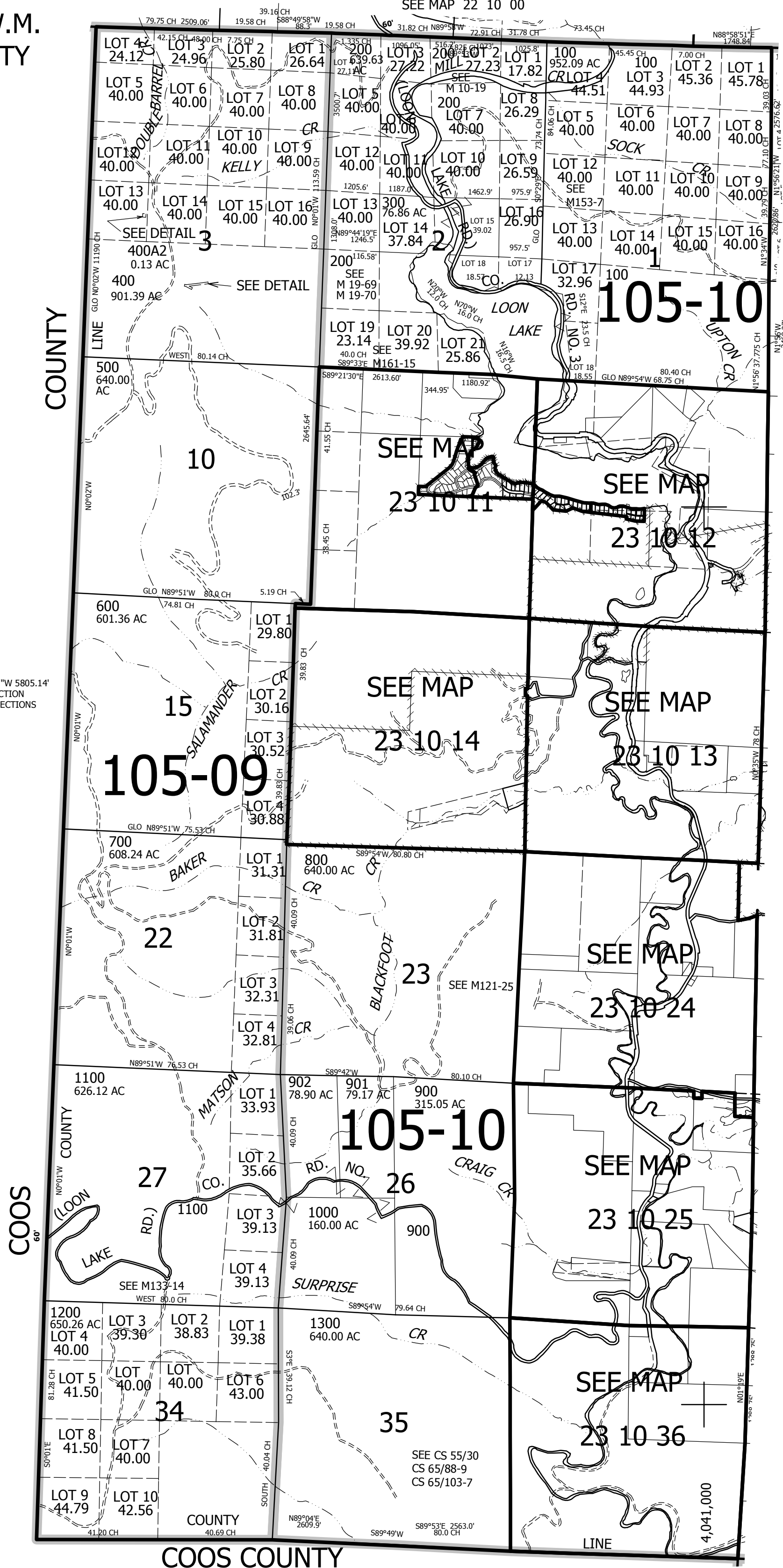
- 1. S83°17'W 244.06'
- 2. N80°11'W 30'
- 3. S9°49'W 41.72'
- 4. S80°11'E 30'
- 5. S63°39'E 144.06'
- 6. N26°21'E 40'
- 7. N63°39'W 82.62'
- 8. N83°17'E 432.62'
- 9. N6°43'W 40'
- 10. S83°17'W 250'

TL 400A2 DETAIL 1"=100'



P.O.B. BEARS S45°56'53"W 5805.14' FROM THE CLOSING SECTION CORNER COMMON TO SECTIONS 2 AND 3

- 1. S6°07'28"W 75.00'
- 2. N83°52'32"W 75.00'
- 3. N6°07'28"E 75.00'
- 4. S83°52'32"E 75.00'



SEE MAP 23 9 00

695,000

23 10 00 & INDEX