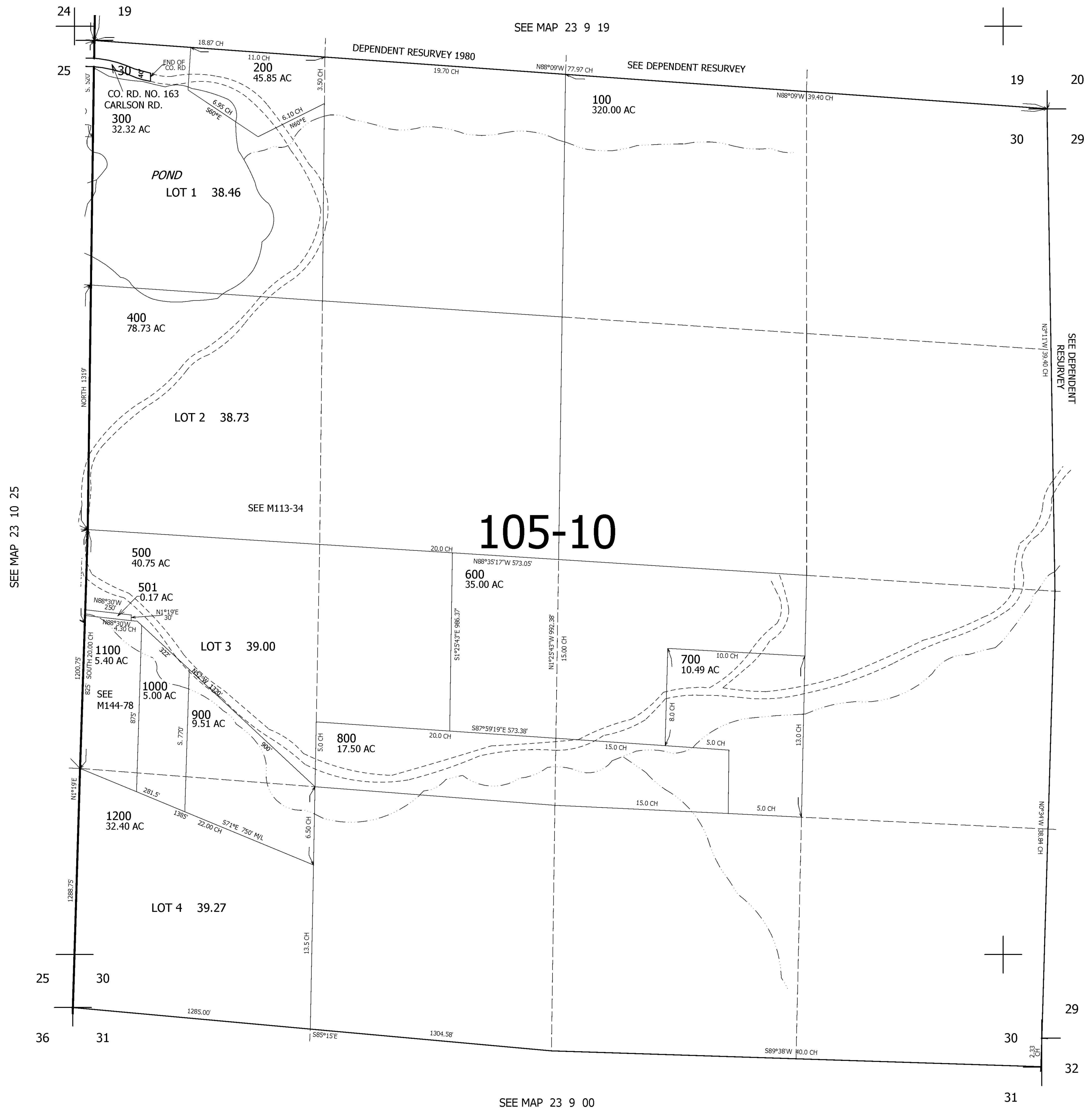


THIS MAP WAS PREPARED FOR ASSESSMENT PURPOSE ONLY.

SEC.30 T.23S. R.9W. W.M.
DOUGLAS COUNTY
1" = 400'

REVISED ON
12-15-08

23 9 30



CANCELLED NOS
502

SEE MAP 23 10 25

SEE MAP 23 9 00

SEE MAP 23 9 00

697,000

4,047,000

23 9 30