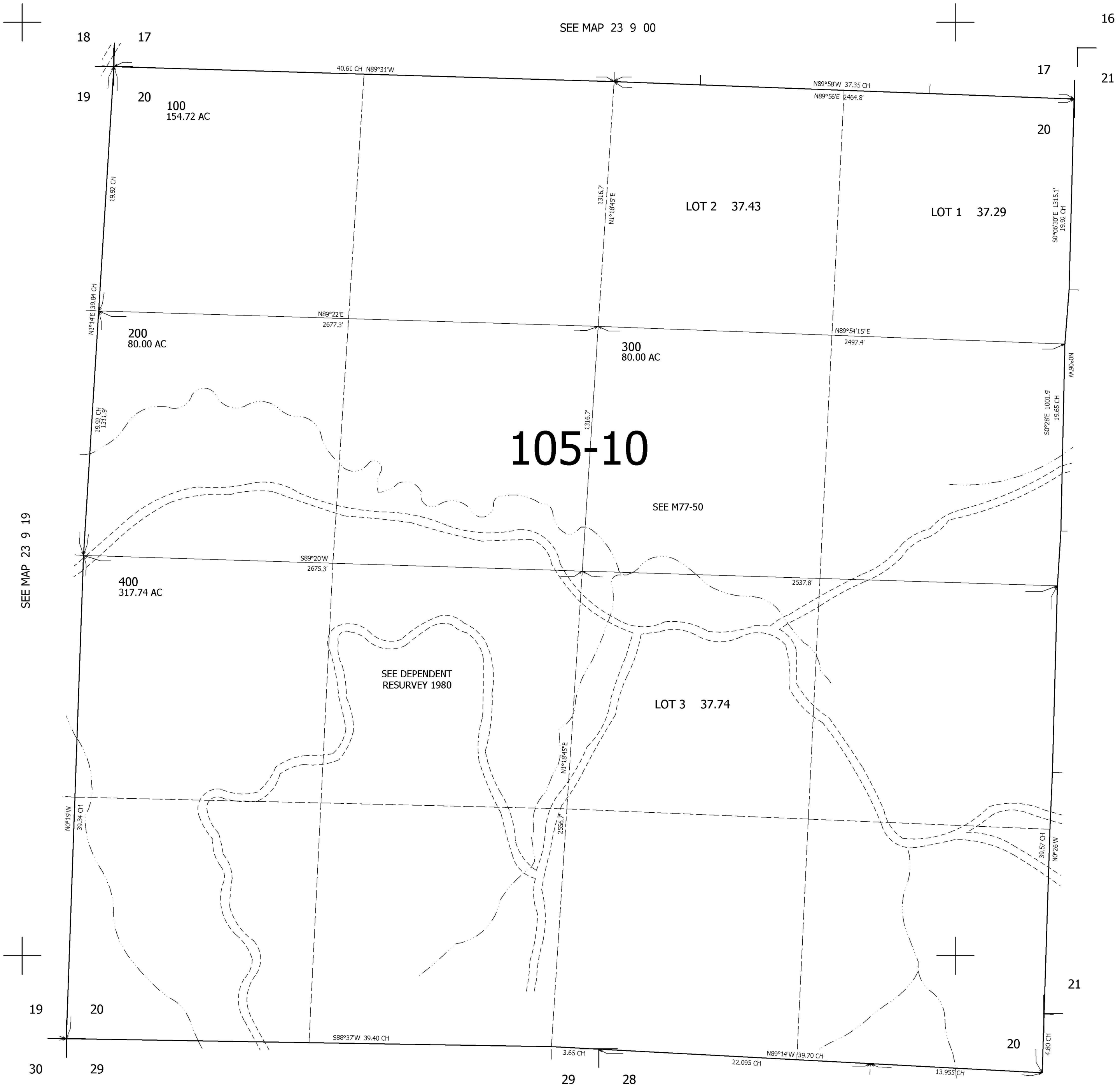


THIS MAP WAS PREPARED FOR ASSESSMENT PURPOSE ONLY.

SEC.20 T.23S. R.9W. W.M.
DOUGLAS COUNTY
1" = 400'

REVISED ON
3-27-95

23 9 20



SEE MAP 23 9 00

SEE MAP 23 9 19

SEE MAP 23 9 00

CANCELLED NOS

702,000

SEE MAP 23 9 00

4,052,000

23 9 20