

THIS MAP WAS PREPARED FOR ASSESSMENT PURPOSE ONLY.

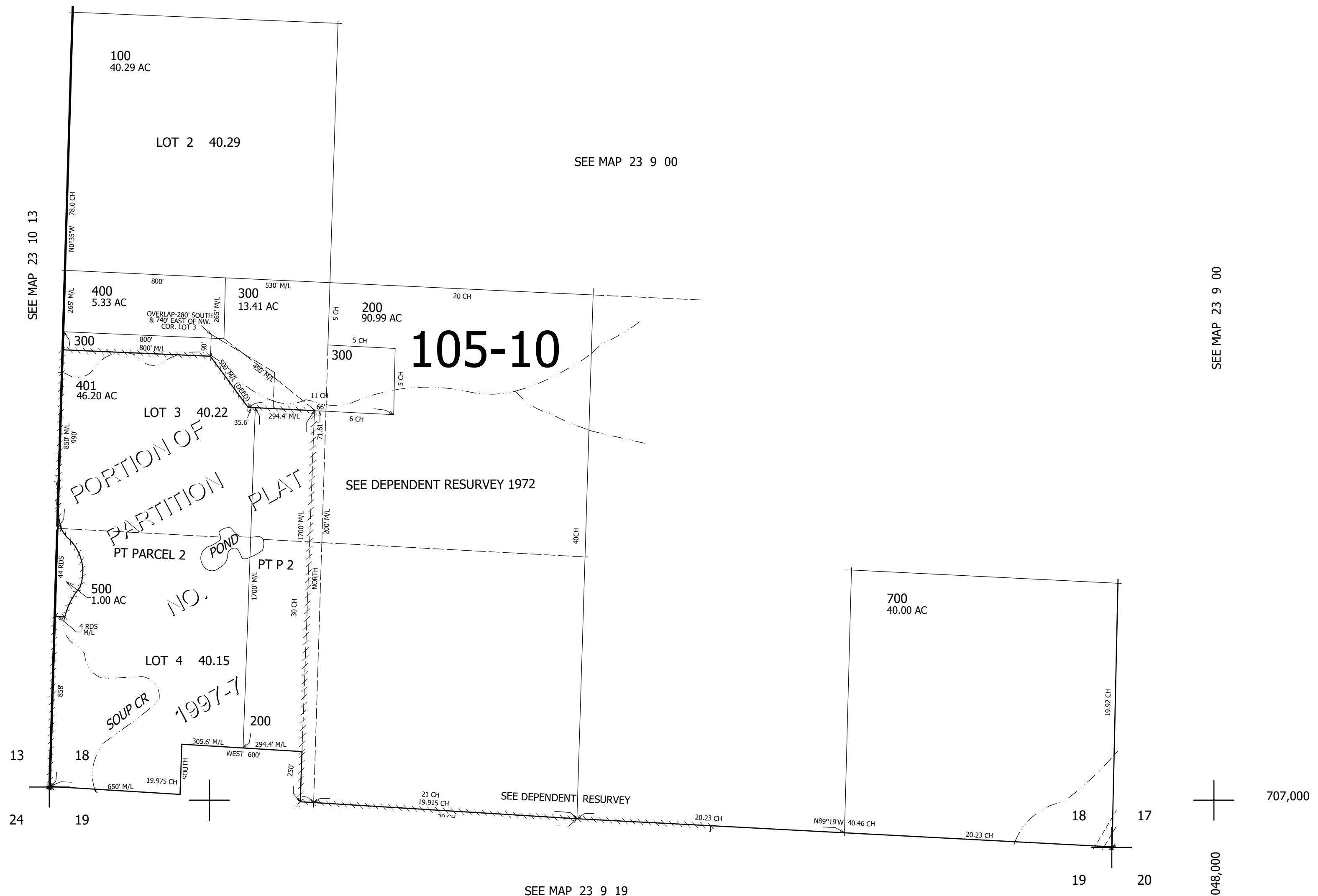
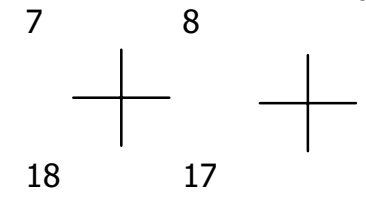
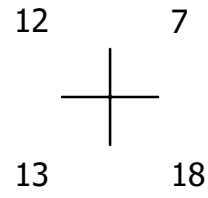
SEC.18 T.23S. R.9W. W.M.
DOUGLAS COUNTY

1" = 400'

REVISED ON
11-24-21

23 9 18

CANCELLED NOS
402 404 600
406 601 403
405 407 408
409



23 9 18