

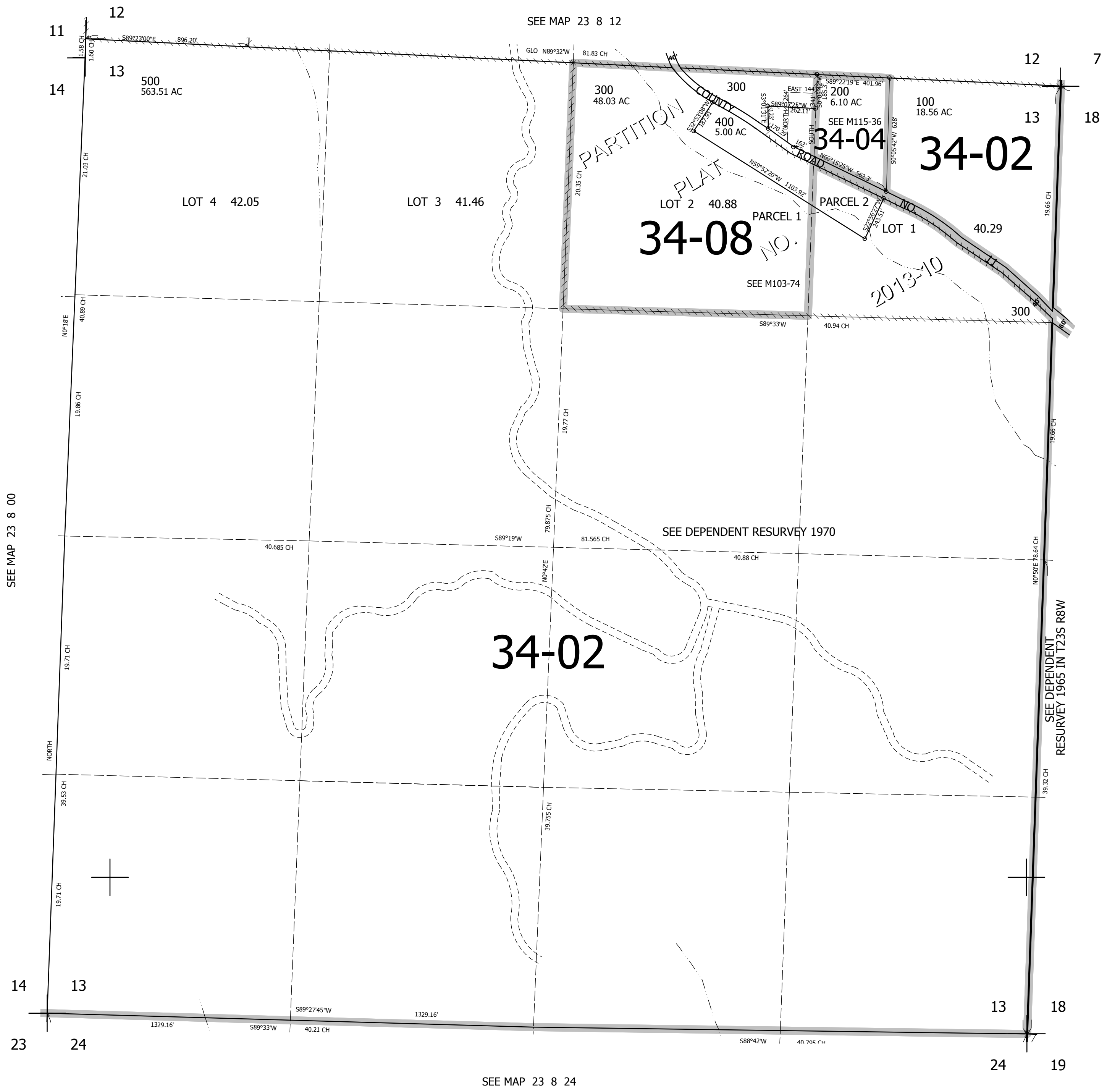
THIS MAP WAS PREPARED FOR  
ASSESSMENT PURPOSE ONLY.

SEC.13 T.23S. R.8W. W.M.  
DOUGLAS COUNTY

REVISED ON  
3-28-13

23 8 13

1" = 400'



CANCELLED NOS  
102 201 301  
100M1 102 101  
401

SEE MAP 23 8 00

SEE MAP 23 7 16

34-02

SEE DEPENDENT RESURVEY 1970

SEE DEPENDENT  
RESURVEY 1965 IN T23S R8W

SEE MAP 23 8 24

707,000

4,104,000

23 8 13