

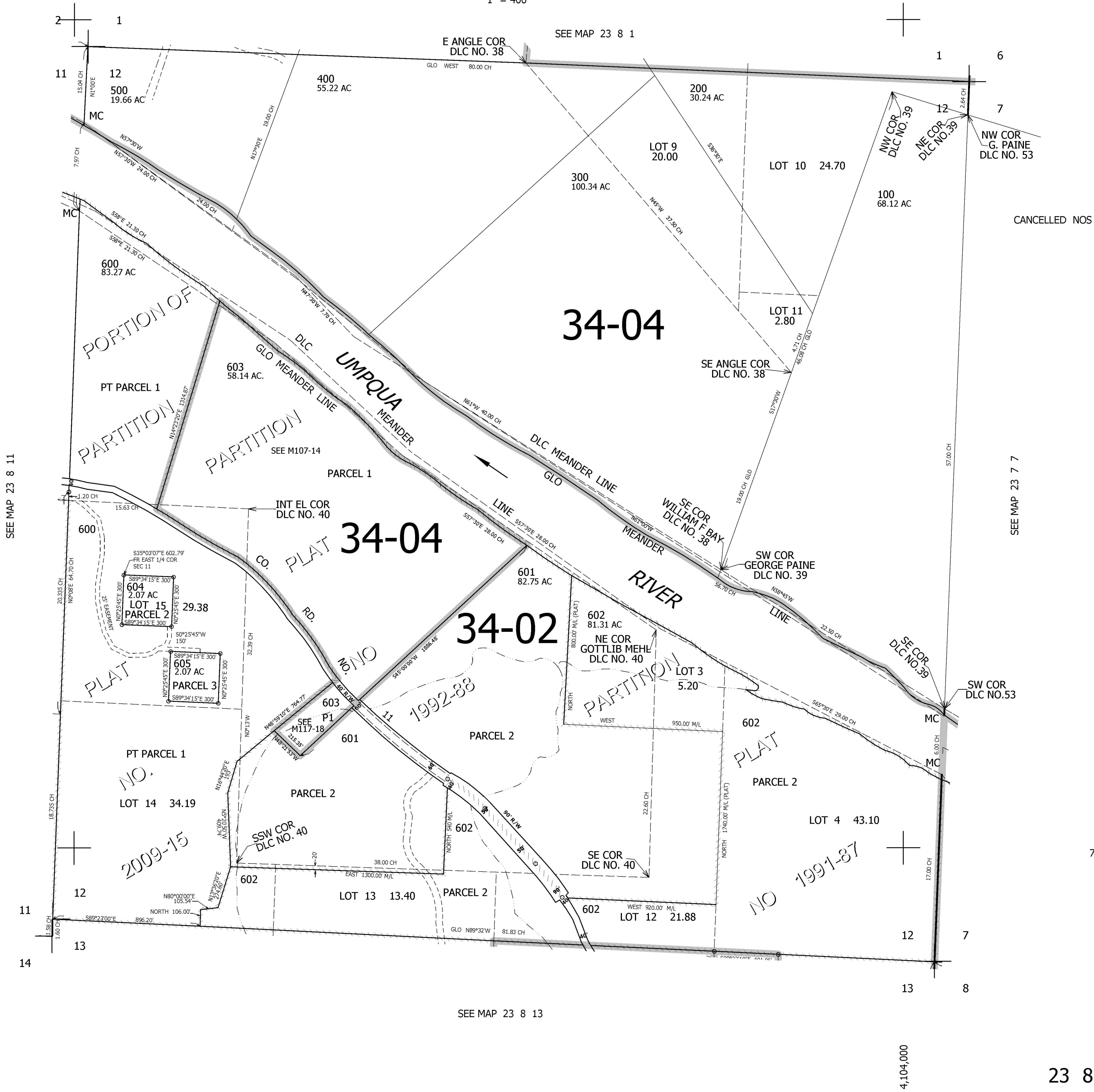
SEC.12 T.23S. R.8W. W.M.
DOUGLAS COUNTY

REVISED ON
4-13-09

23 8 12

1" = 400'

THIS MAP WAS PREPARED FOR
ASSESSMENT PURPOSE ONLY.



SEE MAP 23 8 11

SEE MAP 23 7 7

SEE MAP 23 8 13

712,000

4,104,000

23 8 12