

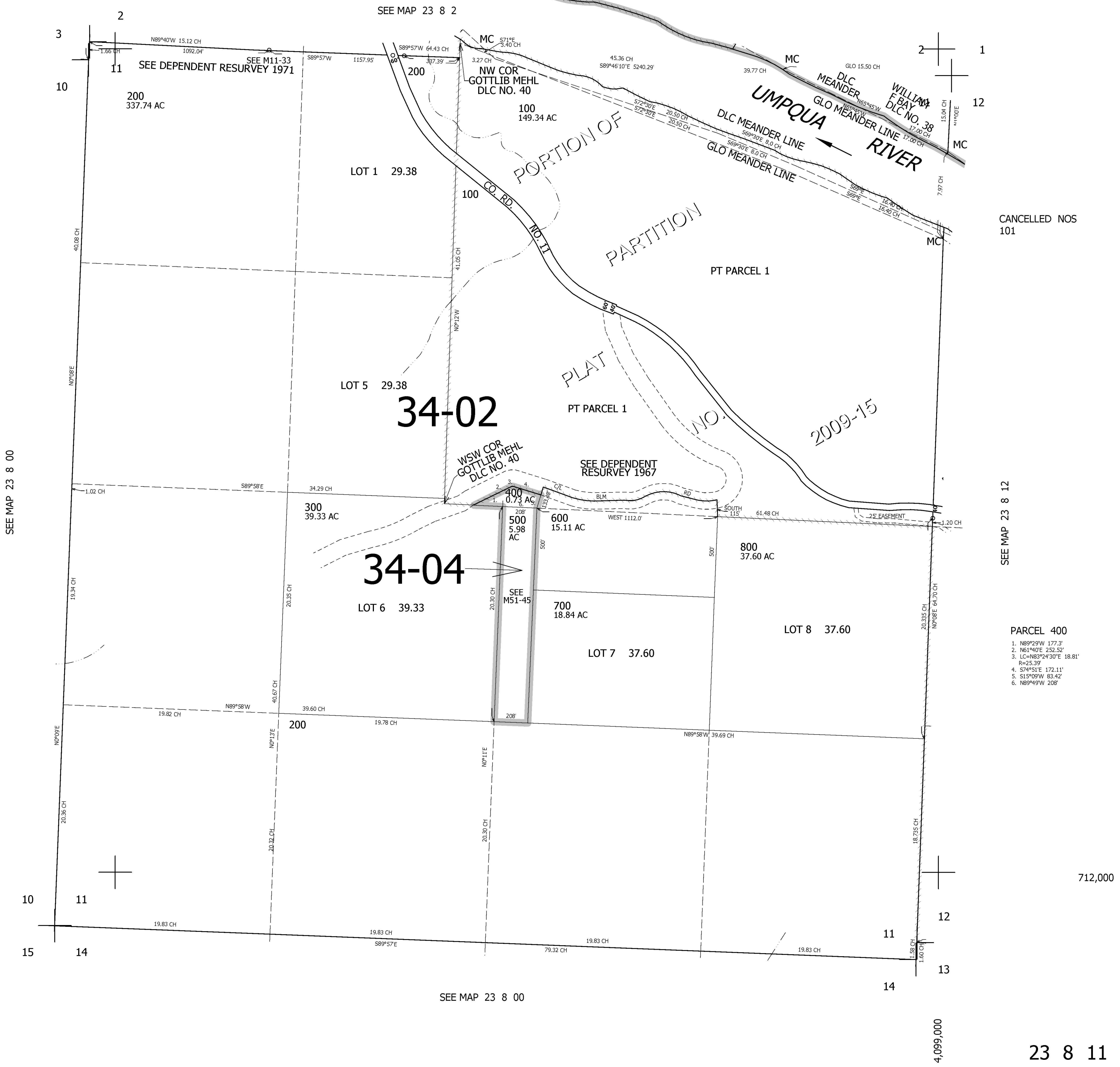
THIS MAP WAS PREPARED FOR ASSESSMENT PURPOSE ONLY.

SEC.11 T.23S. R.8W. W.M. DOUGLAS COUNTY

REVISED ON 4-13-09

23 8 11

1" = 400'



CANCELLED NOS 101

SEE MAP 23 8 12

PARCEL 400

1. N89°29'W 177.3'
2. N61°40'E 252.52'
3. LC=N83°24'30"E 18.81'
- R=25.39'
4. S74°51'E 172.11'
5. S15°09'W 83.42'
6. N89°49'W 208'

712,000

SEE MAP 23 8 00

4,099,000

23 8 11