

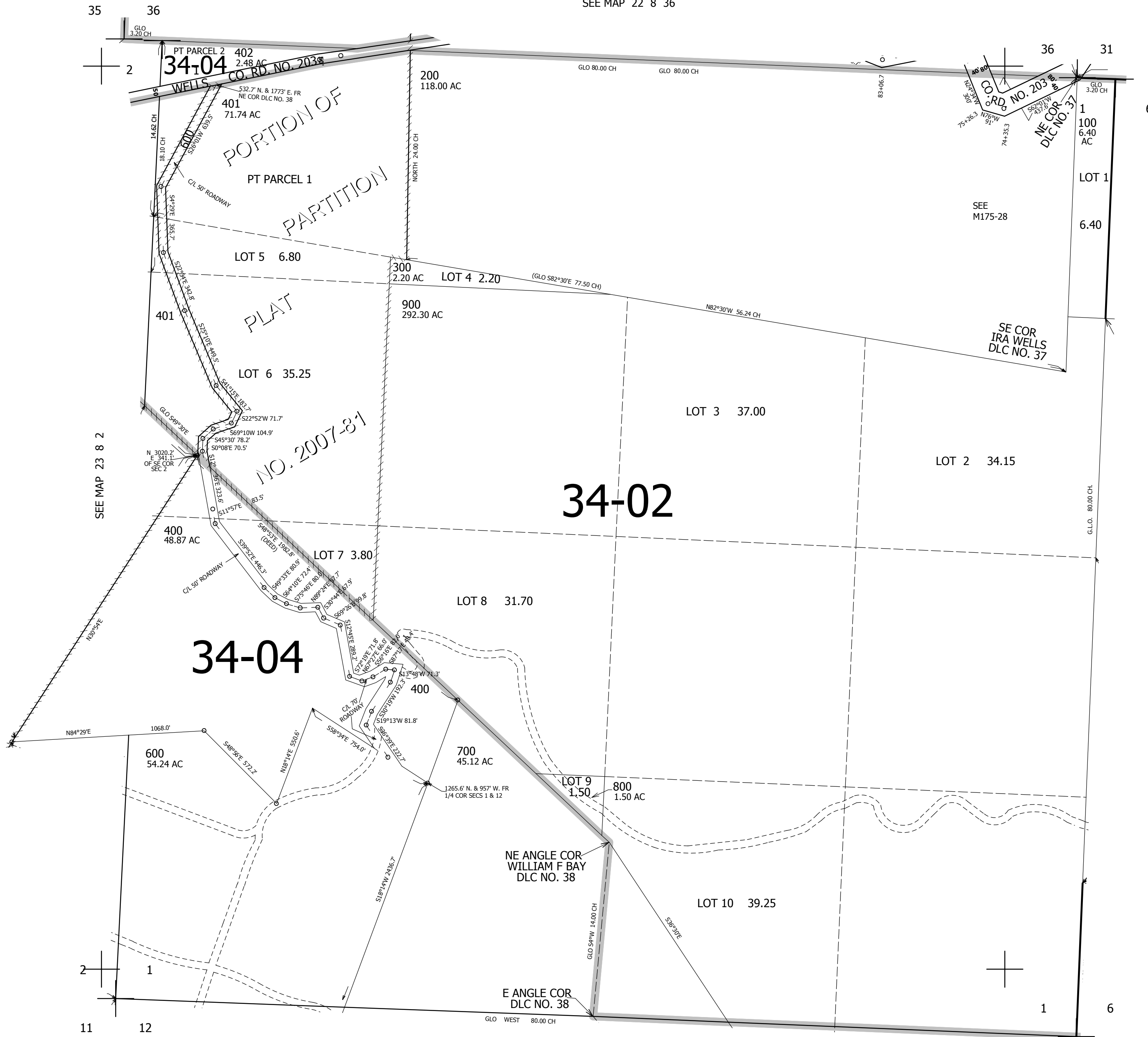
THIS MAP WAS PREPARED FOR ASSESSMENT PURPOSE ONLY.

SEC.1 T.23S. R.8W. W.M.  
DOUGLAS COUNTY  
1" = 400'

REVISED ON  
5-27-09

23 8 1

SEE MAP 22 8 36



CANCELLED NOS  
500M1 500

717,000

SEE MAP 23 8 12

23 8 1

4,104,000