

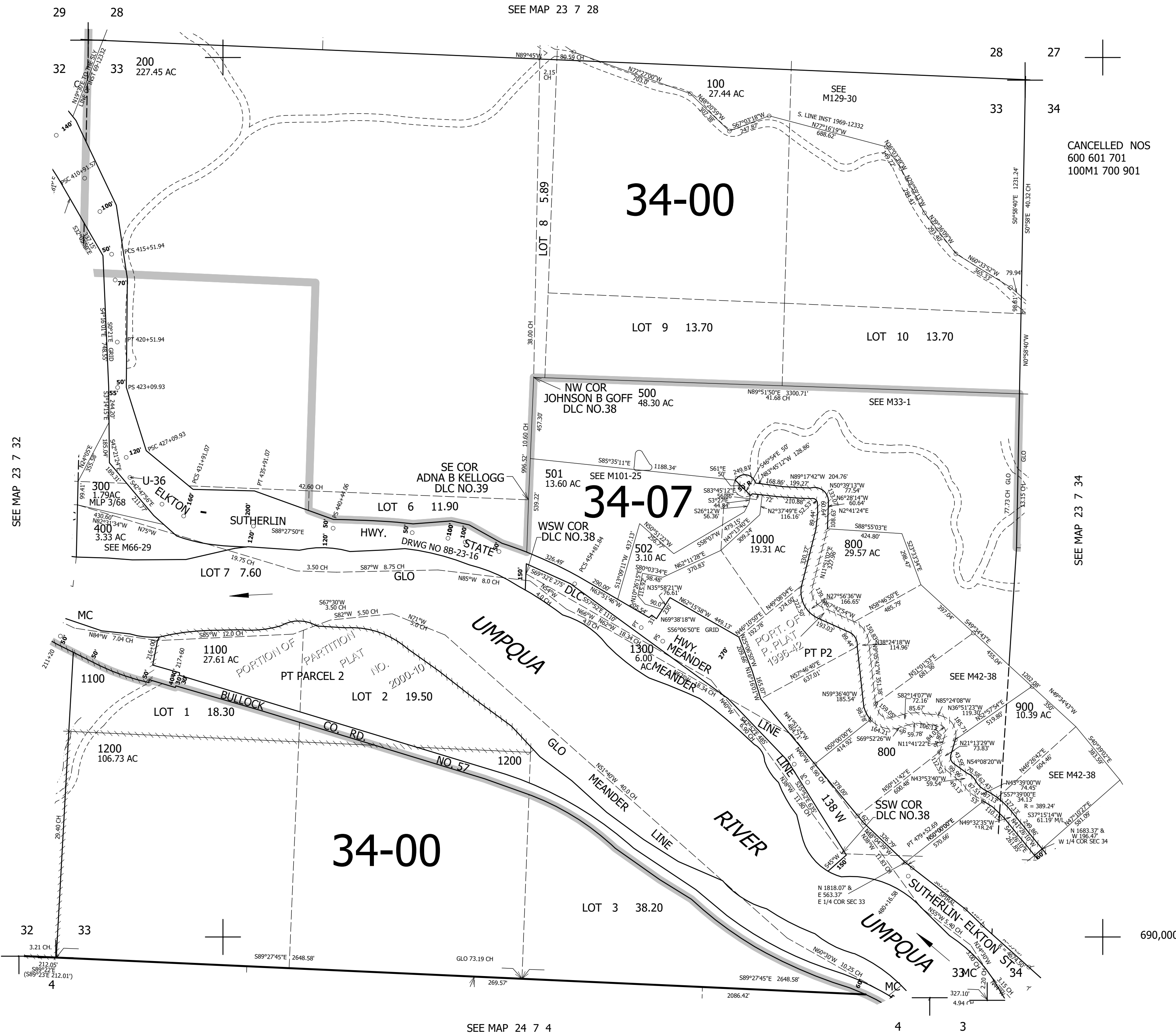
THIS MAP WAS PREPARED FOR ASSESSMENT PURPOSE ONLY.

SEC.33 T.23S. R.7W. W.M.
DOUGLAS COUNTY

1" 400'

REVISED ON
8-17-17

23 7 33



CANCELLED NOS
600 601 701
100M1 700 901

SEE MAP 23 7 34

SEE MAP 23 7 32

SEE MAP 24 7 4

690,000

23 7 33

4,115,000