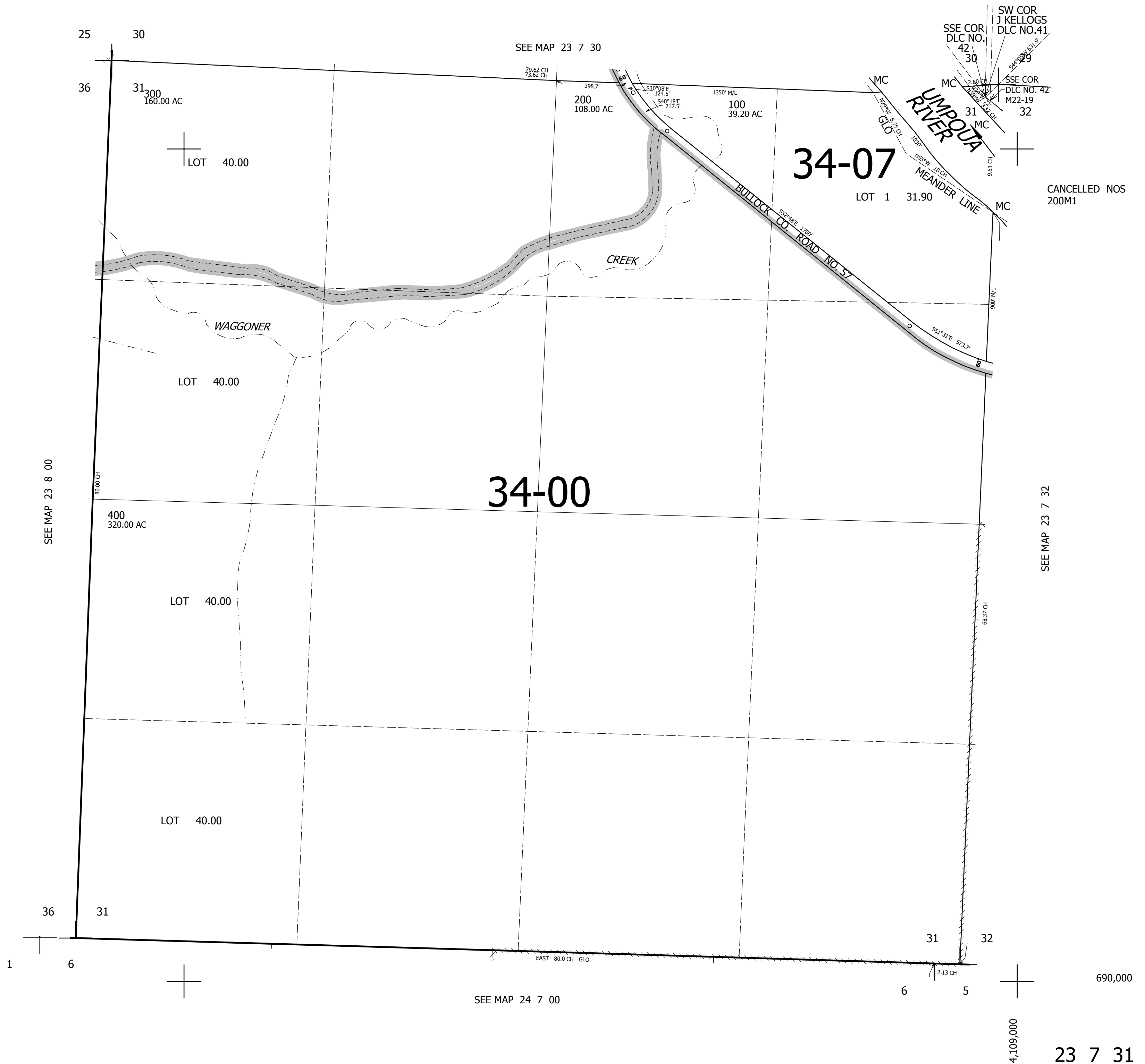


THIS MAP WAS PREPARED FOR ASSESSMENT PURPOSE ONLY.

SEC.31 T.23S. R.7W. W.M.
DOUGLAS COUNTY
1" 400'

REVISED ON
6-6-97

23 7 31



CANCELLED NOS
200M1

SEE MAP 23 7 32

SEE MAP 23 8 00

SEE MAP 23 7 30

SEE MAP 24 7 00

690,000

4,109,000

23 7 31