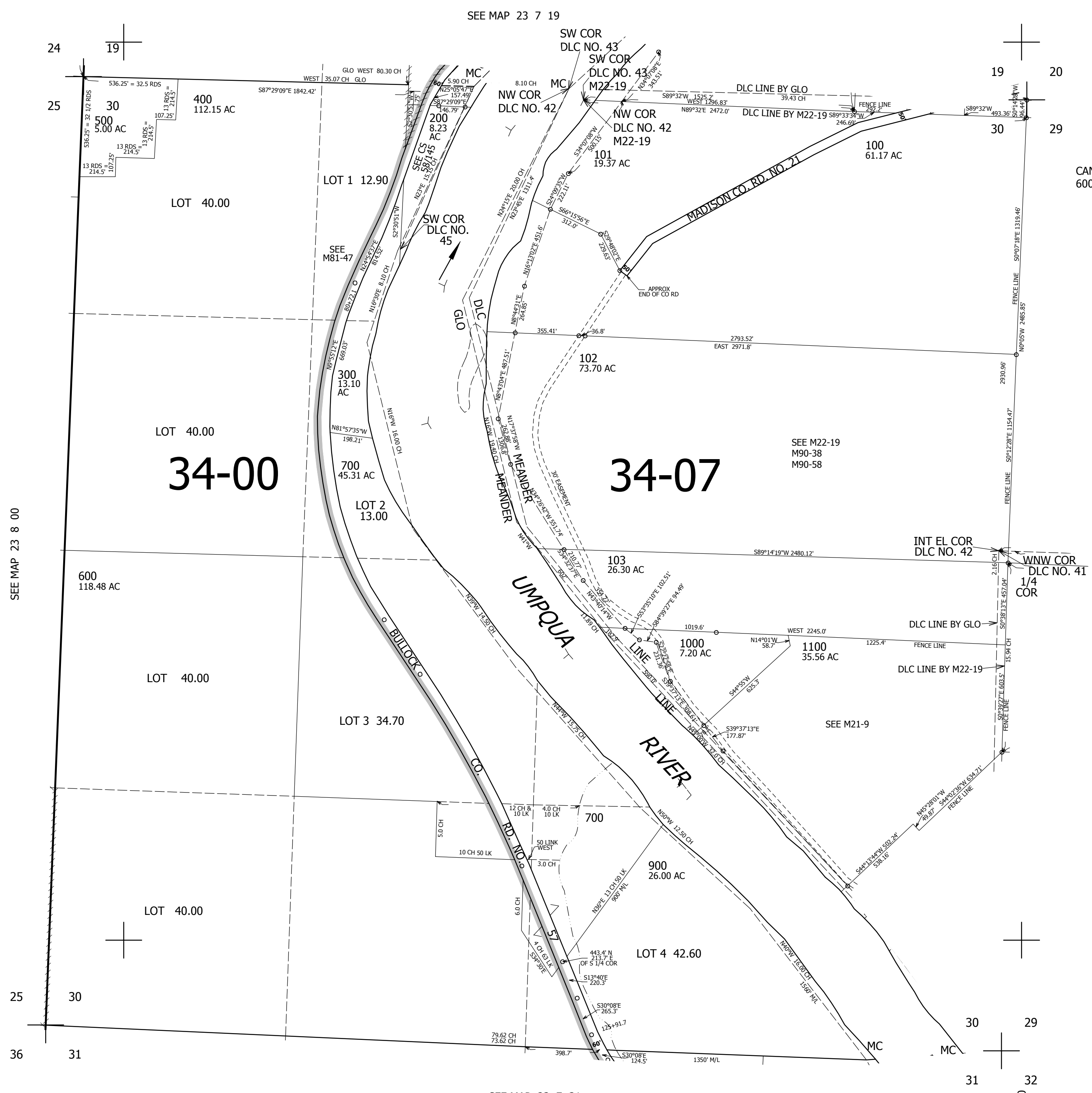


THIS MAP WAS PREPARED FOR ASSESSMENT PURPOSE ONLY.

SEC.30 T.23S. R.7W. W.M.
DOUGLAS COUNTY
1" 400'

REVISED ON
8-29-17

23 7 30



CANCELLED NOS
600M1 500M1 800

SEE MAP 23 8 00

SEE MAP 23 7 29

SEE MAP 23 7 31

696,000

23 7 30

4,109,000