

THIS MAP WAS PREPARED FOR ASSESSMENT PURPOSE ONLY.

Upper Left:
123°33'19"W 43°33'3"N
4111513E 701499N ft

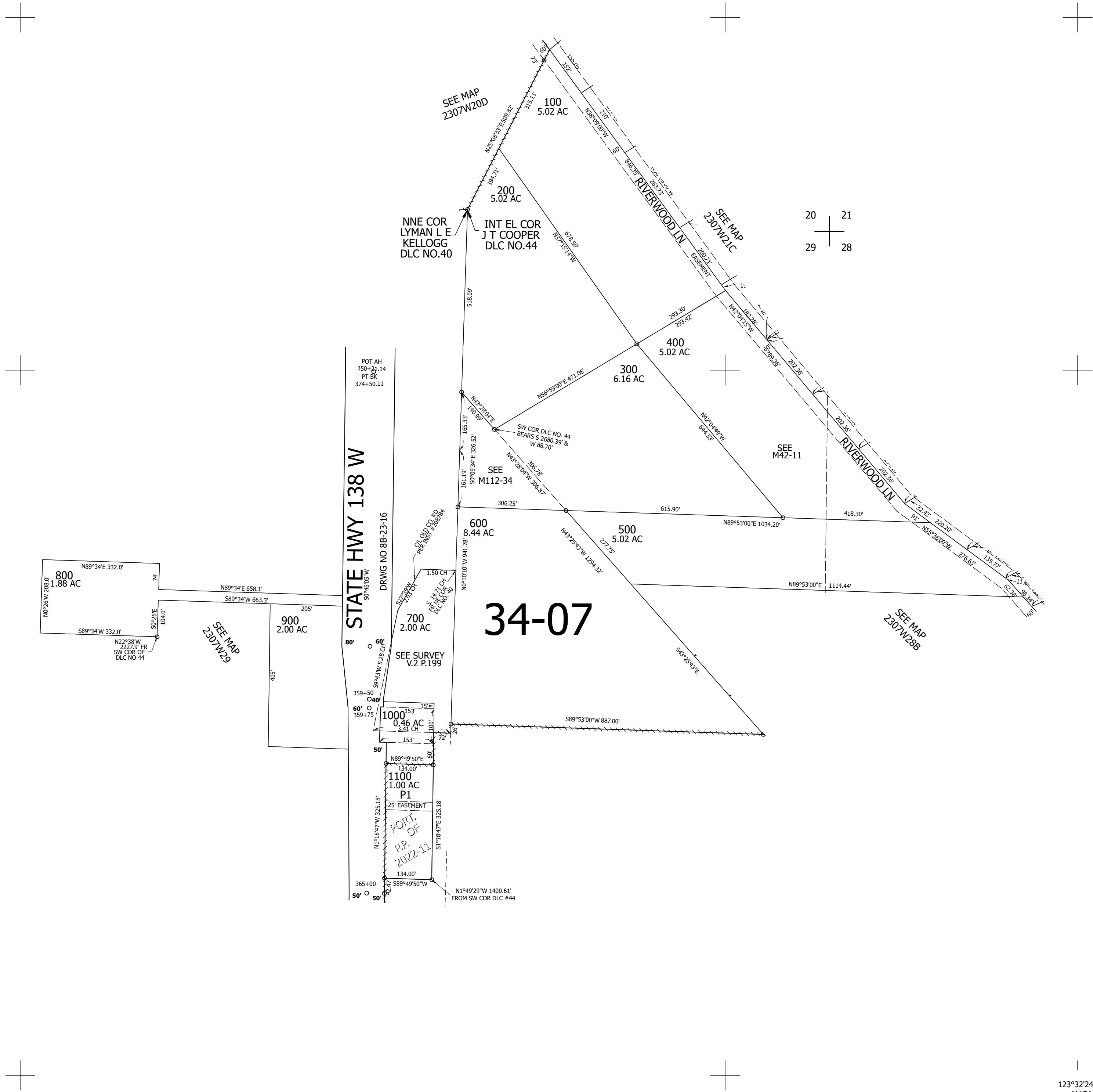
NE1/4 SEC.29 T.23S. R.07W. W.M.
DOUGLAS COUNTY
1" = 200'

Date Exported 2026-05-12

230729A

CANCELLED NOS:
601

1/4 COR



34-07

20 21
29 28

Lower Right:
123°32'24"W 43°32'29"N
4115440E 697899N ft

230729A