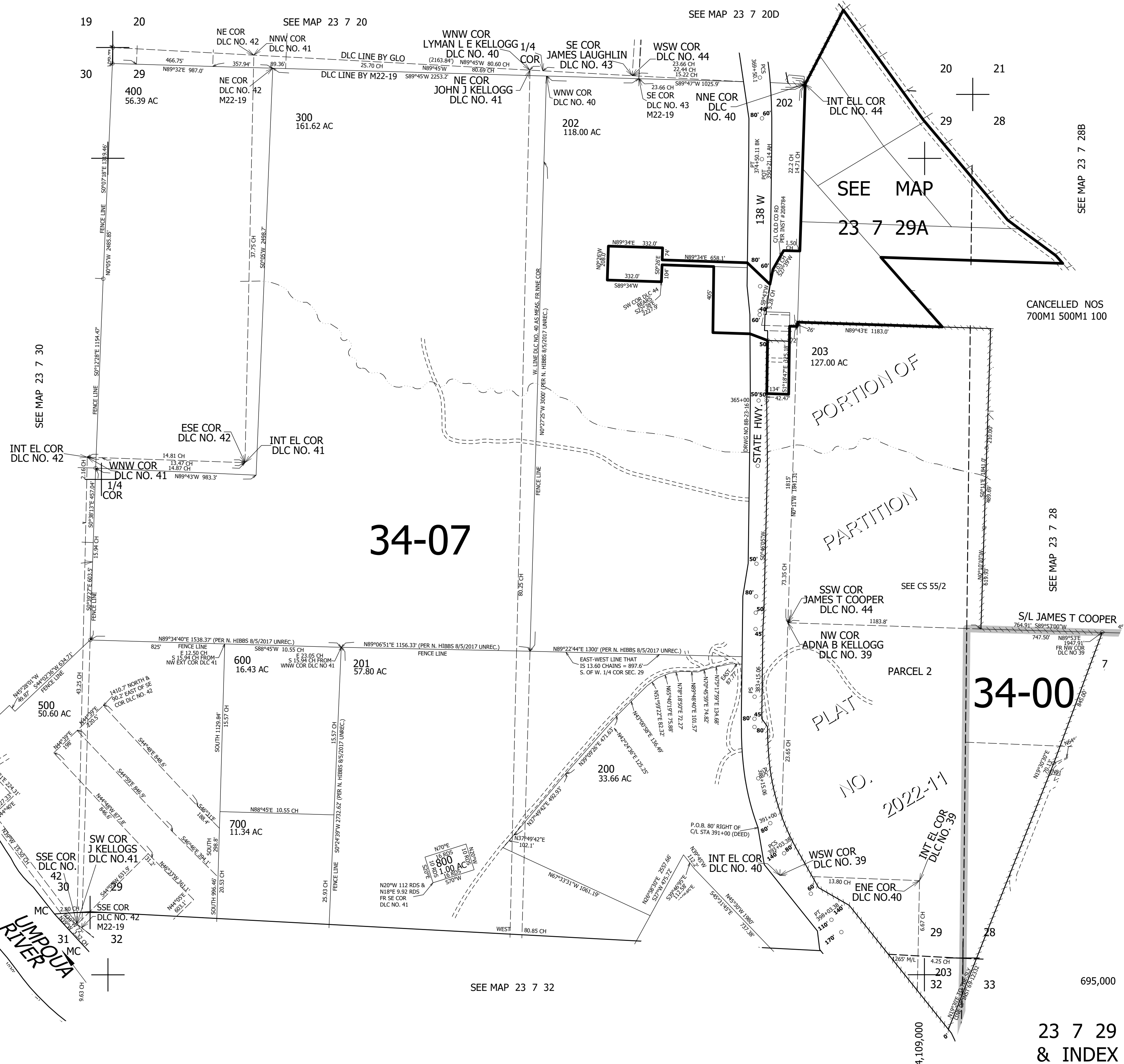


THIS MAP WAS PREPARED FOR ASSESSMENT PURPOSE ONLY.

SEC.29 T.23S. R.7W. W.M. DOUGLAS COUNTY 1" 400'

REVISED ON 3-2-22

23 7 29 & INDEX



SEE MAP 23 7 30

SEE MAP 23 7 20D

SEE MAP 23 7 28B

SEE MAP 23 7 28

SEE MAP 23 7 32

695,000

23 7 29 & INDEX