

THIS MAP WAS PREPARED FOR ASSESSMENT PURPOSE ONLY.

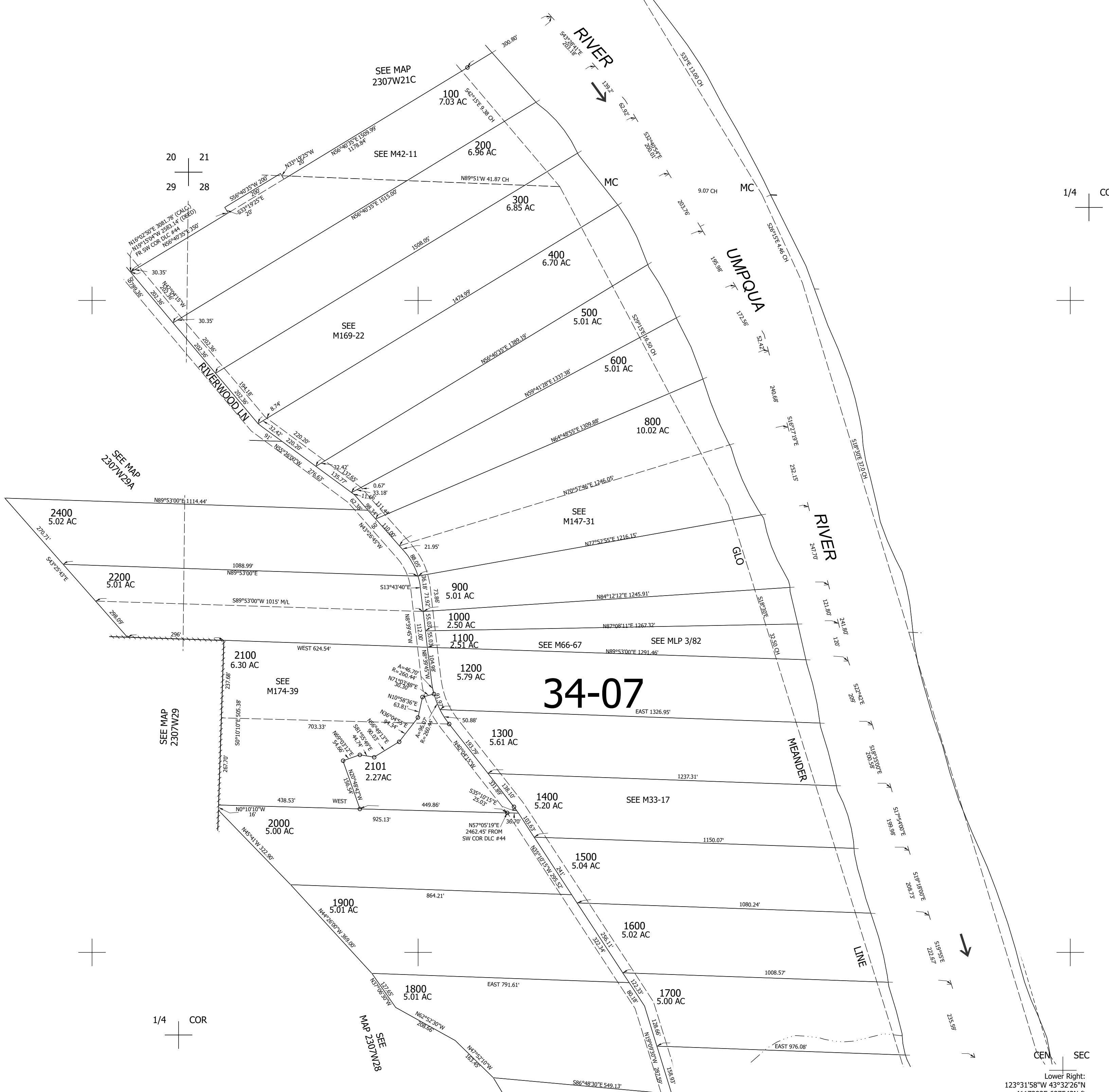
Upper Left:
123°32'53"W 43°32'59"N
4113367E 701020N ft

NW1/4 SEC.28 T.23S. R.07W. W.M.
DOUGLAS COUNTY
1" = 200'

Date Exported 2025-01-23

230728B

CANCELLED NOS:
2300 700



1/4 COR

1/4 COR

CEN SEC 230728B

Lower Right:
123°31'58"W 43°32'26"N
4117292E 697543N ft