

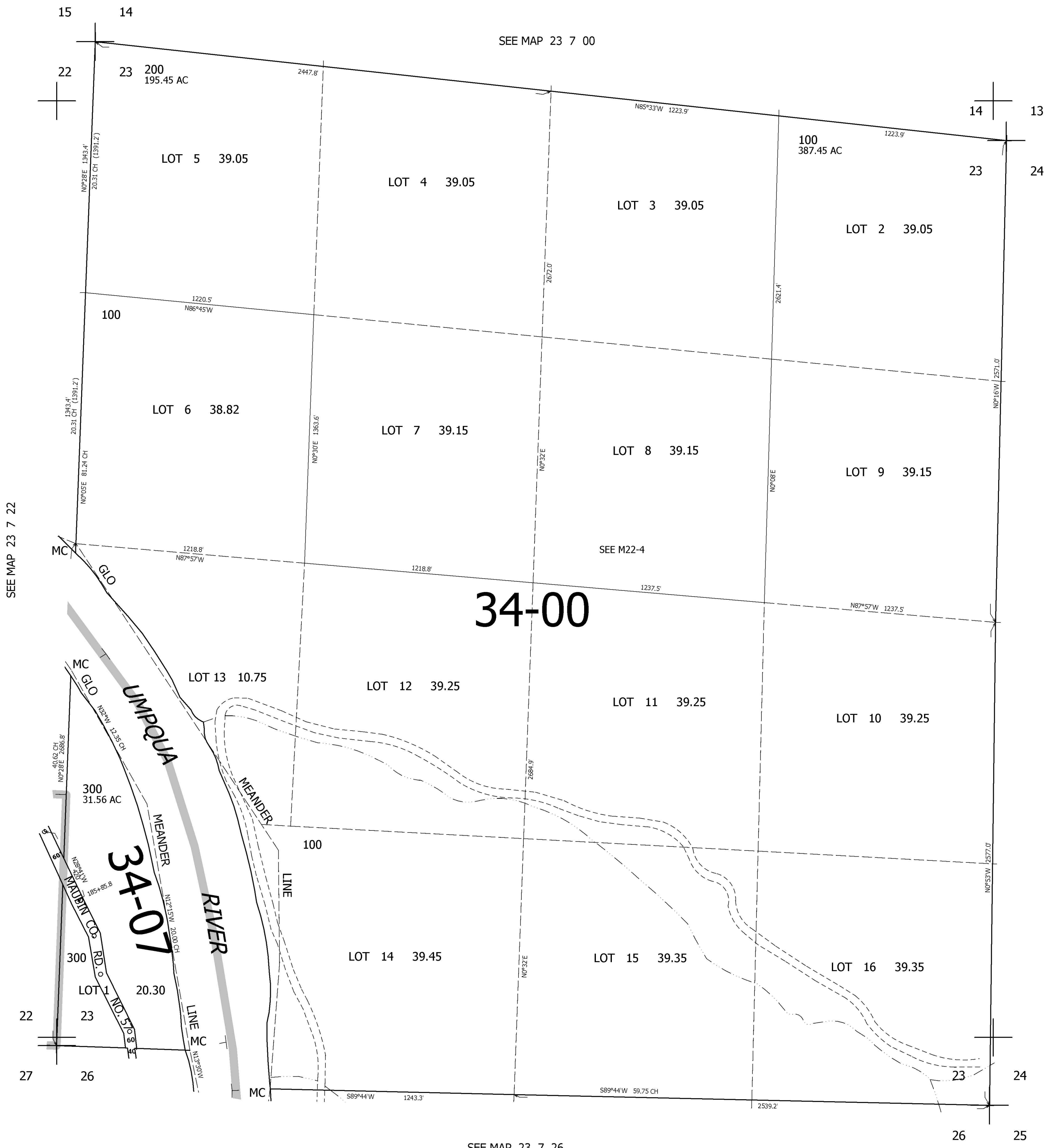
THIS MAP WAS PREPARED FOR ASSESSMENT PURPOSE ONLY.

SEC.23 T.23S. R.7W. W.M. DOUGLAS COUNTY

1" 400'

REVISED ON 6-6-97

23 7 23



CANCELLED NOS

SEE MAP 23 7 00

700,000

4,130,000

23 7 23