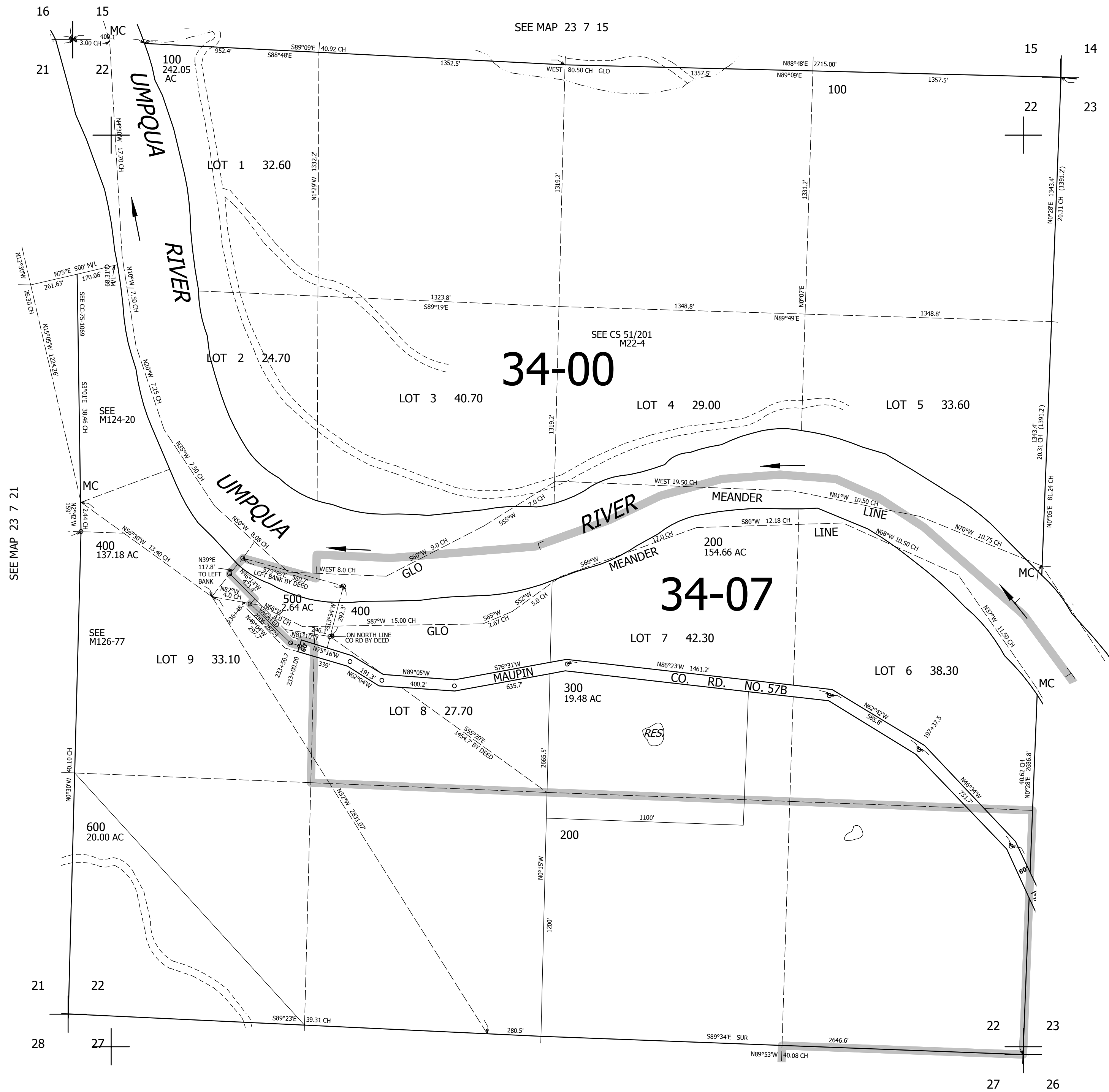


THIS MAP WAS PREPARED FOR ASSESSMENT PURPOSE ONLY.

SEC.22 T.23S. R.7W. W.M.
DOUGLAS COUNTY
1" 400'

REVISED ON
3-15-17

23 7 22



CANCELLED NOS

SEE MAP 23 7 21

SEE MAP 23 7 23

SEE MAP 23 7 27

700,000

4,125,000

23 7 22