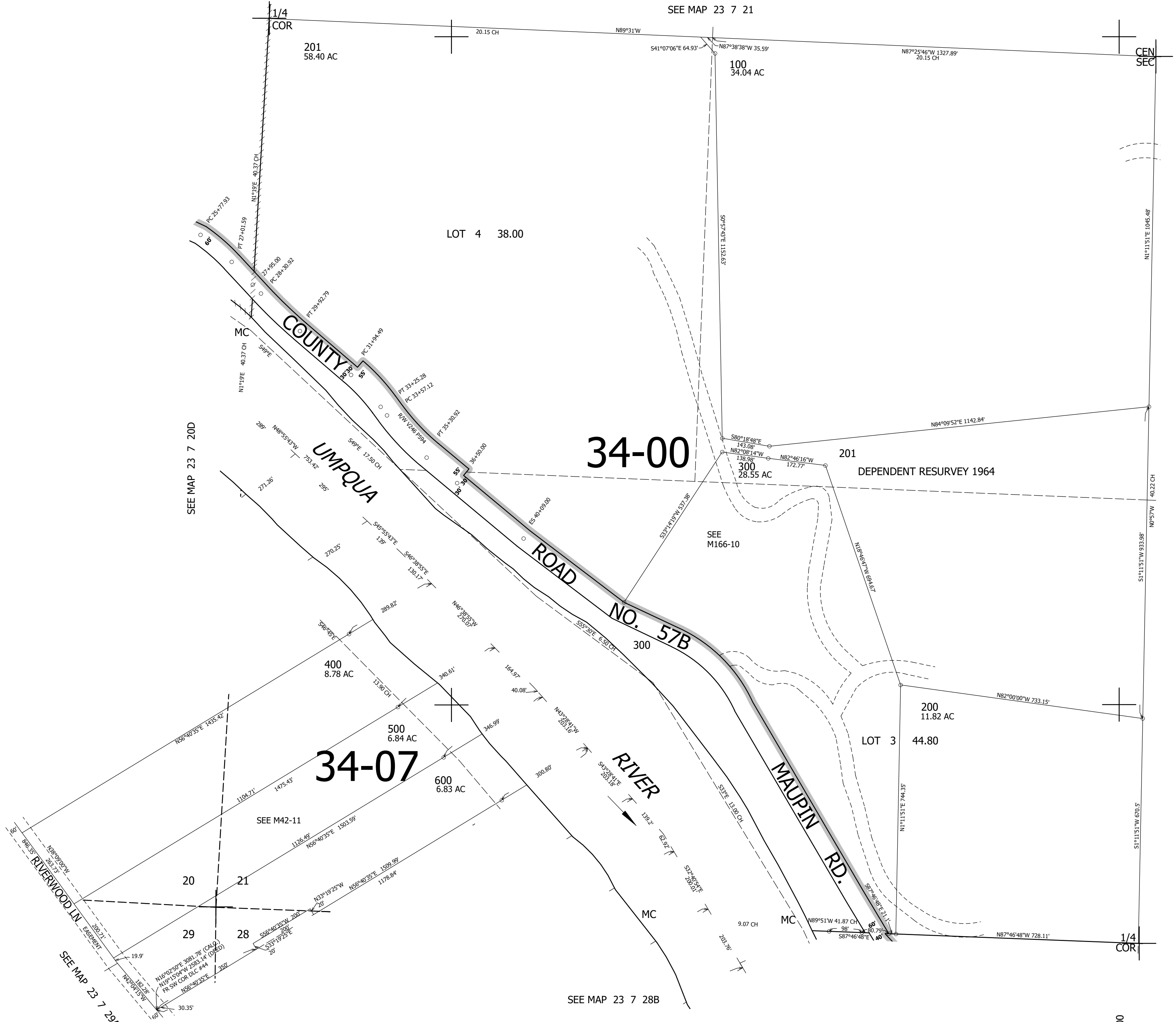


THIS MAP WAS PREPARED FOR ASSESSMENT PURPOSE ONLY.

SW1/4 SEC.21 T.23S. R.7W. W.M.
DOUGLAS COUNTY
1" = 200'

REVISED ON
12-16-21

23 7 21C



CANCELLED NOS
202 203 101
102 601

SEE MAP 23 7 21

701,000

SEE MAP 23 7 28B

4,117,000

23 7 21C