

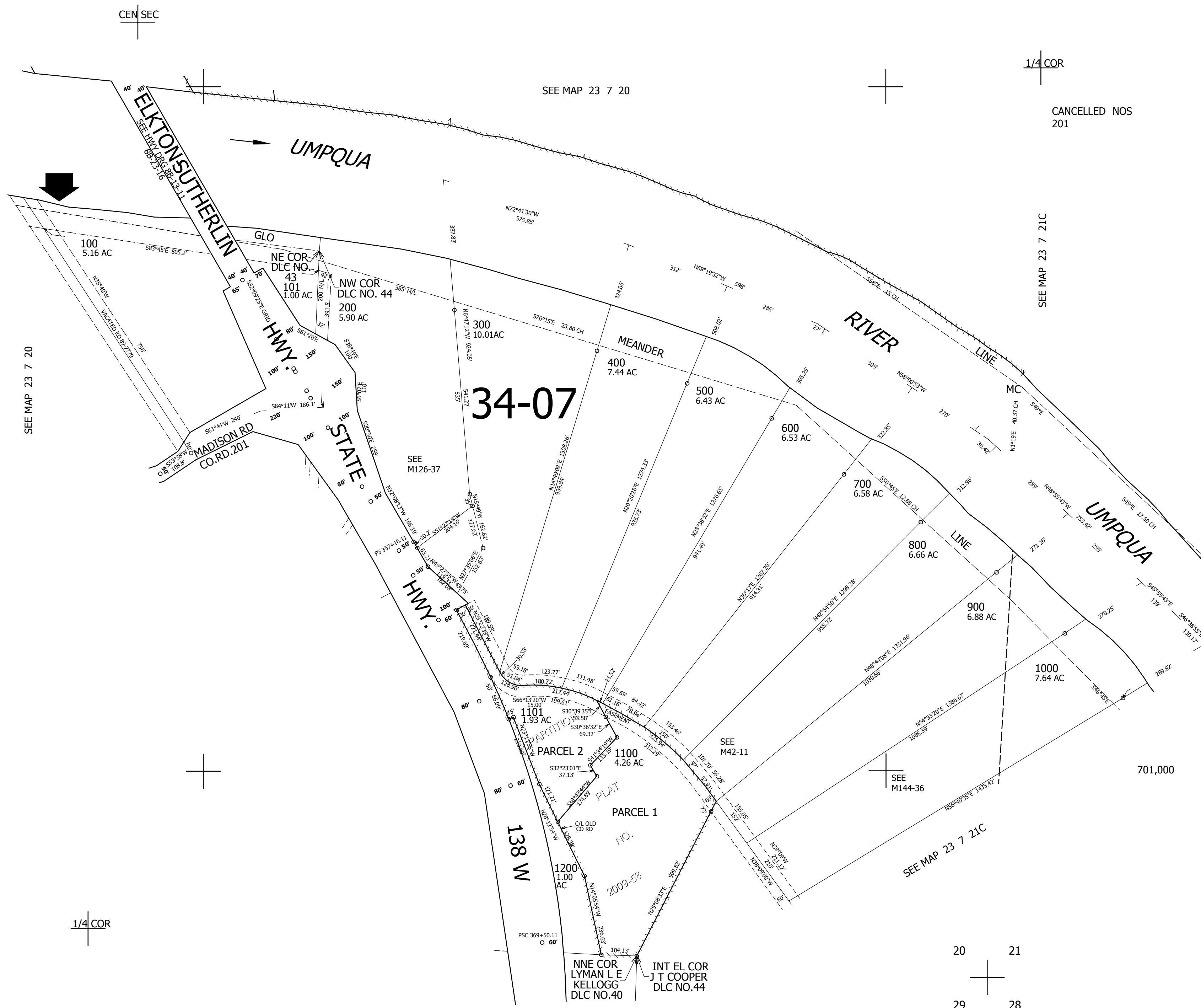
THIS MAP WAS PREPARED FOR ASSESSMENT PURPOSE ONLY.

SE1/4 SEC.20 T.23S. R.7W. W.M.  
DOUGLAS COUNTY

1" = 200'

REVISED ON  
8-29-17

23 7 20D



SEE MAP 23 7 20

SEE MAP 23 7 20

1/4 COR

CANCELLED NOS  
201

SEE MAP 23 7 21C

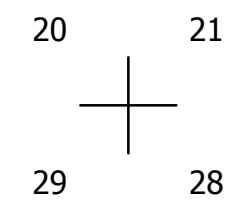
34-07

138 W

701,000

1/4 COR

SEE MAP 23 7 21C



SEE MAP 23 7 29A

4,114,000

23 7 20D