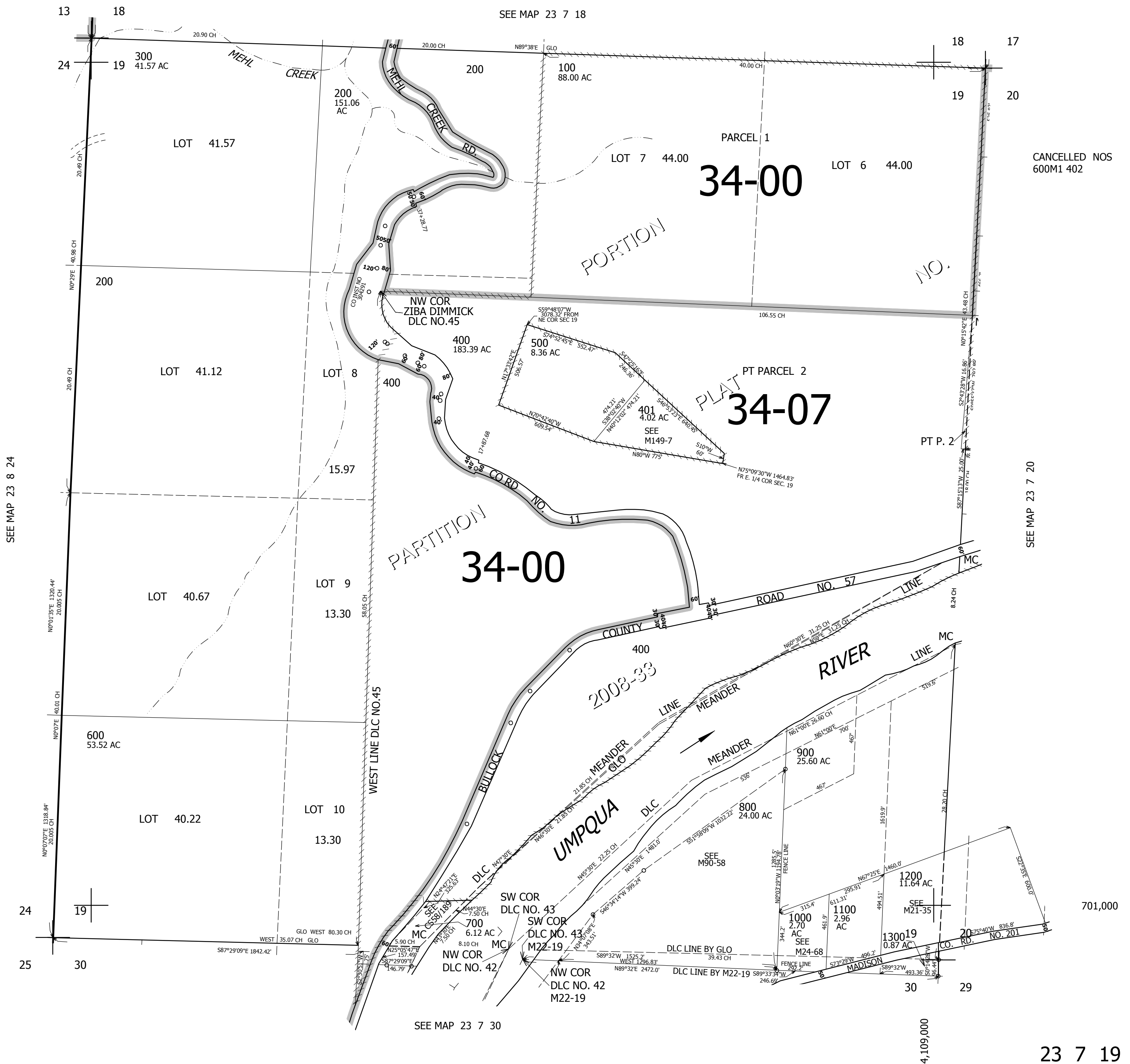


THIS MAP WAS PREPARED FOR ASSESSMENT PURPOSE ONLY.

SEC.19 T.23S. R.7W. W.M.  
DOUGLAS COUNTY  
1" = 400'

REVISED ON  
8-29-17

23 7 19



CANCELLED NOS  
600M1 402

SEE MAP 23 7 20

701,000

23 7 19