

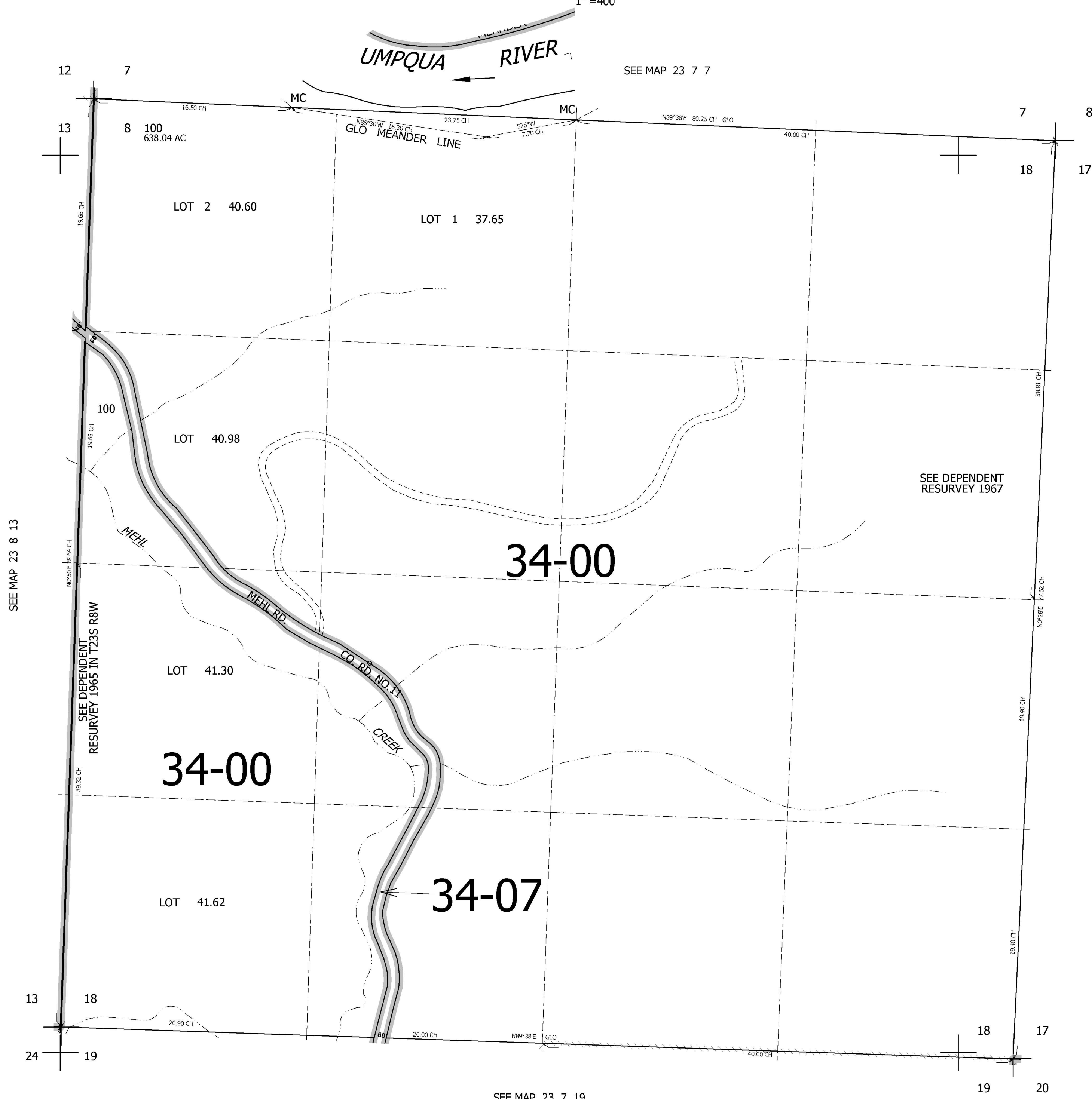
THIS MAP WAS PREPARED FOR ASSESSMENT PURPOSE ONLY.

SEC.18 T.23S. R.7W. W.M.  
DOUGLAS COUNTY

REVISED ON  
6-6-97

23 7 18

1" = 400'



SEE MAP 23 7 7

SEE MAP 23 8 13

SEE DEPENDENT  
RESURVEY 1965 IN T23S R8W

SEE DEPENDENT  
RESURVEY 1967

SEE MAP 23 7 17

CANCELLED NOS  
100M1

SEE MAP 23 7 19

706,000

4,109,000

23 7 18