

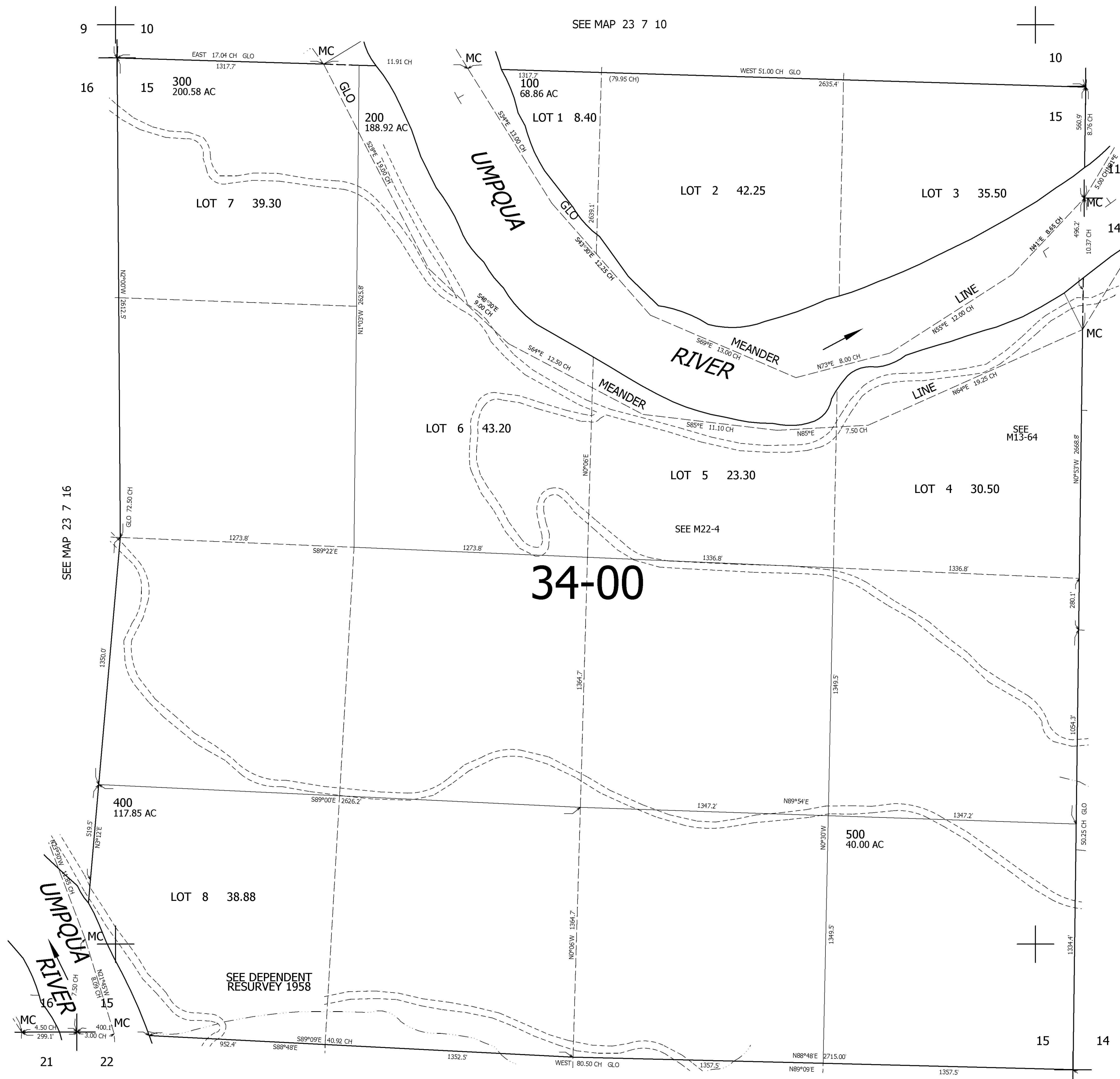
THIS MAP WAS PREPARED FOR ASSESSMENT PURPOSE ONLY.

SEC.15 T.23S. R.7W. W.M. DOUGLAS COUNTY

REVISED ON

23 7 15

1" = 400'



SEE MAP 23 7 10

SEE MAP 23 7 16

SEE MAP 23 7 00

34-00

SEE DEPENDENT RESURVEY 1958

SEE MAP 23 7 22

CANCELLED NOS

706,000

4,125,000

23 7 15