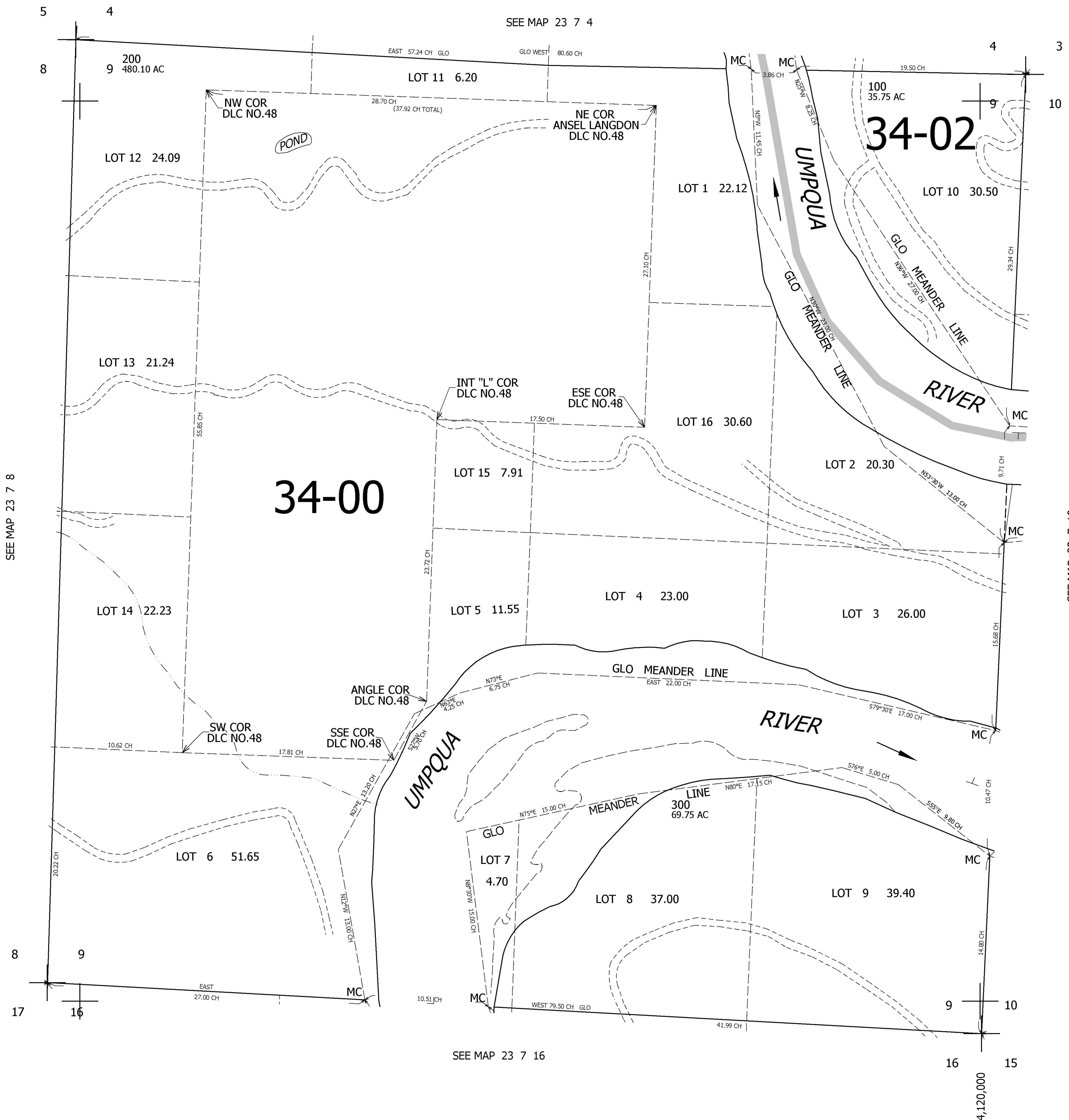


THIS MAP WAS PREPARED FOR ASSESSMENT PURPOSE ONLY.

SEC.9 T.23S. R.7W. W.M.  
DOUGLAS COUNTY  
1" = 400'

REVISED ON

23 7 9



CANCELLED NOS

SEE MAP 23 7 8

SEE MAP 23 7 10

SEE MAP 23 7 16

711,000

23 7 9

4,120,000