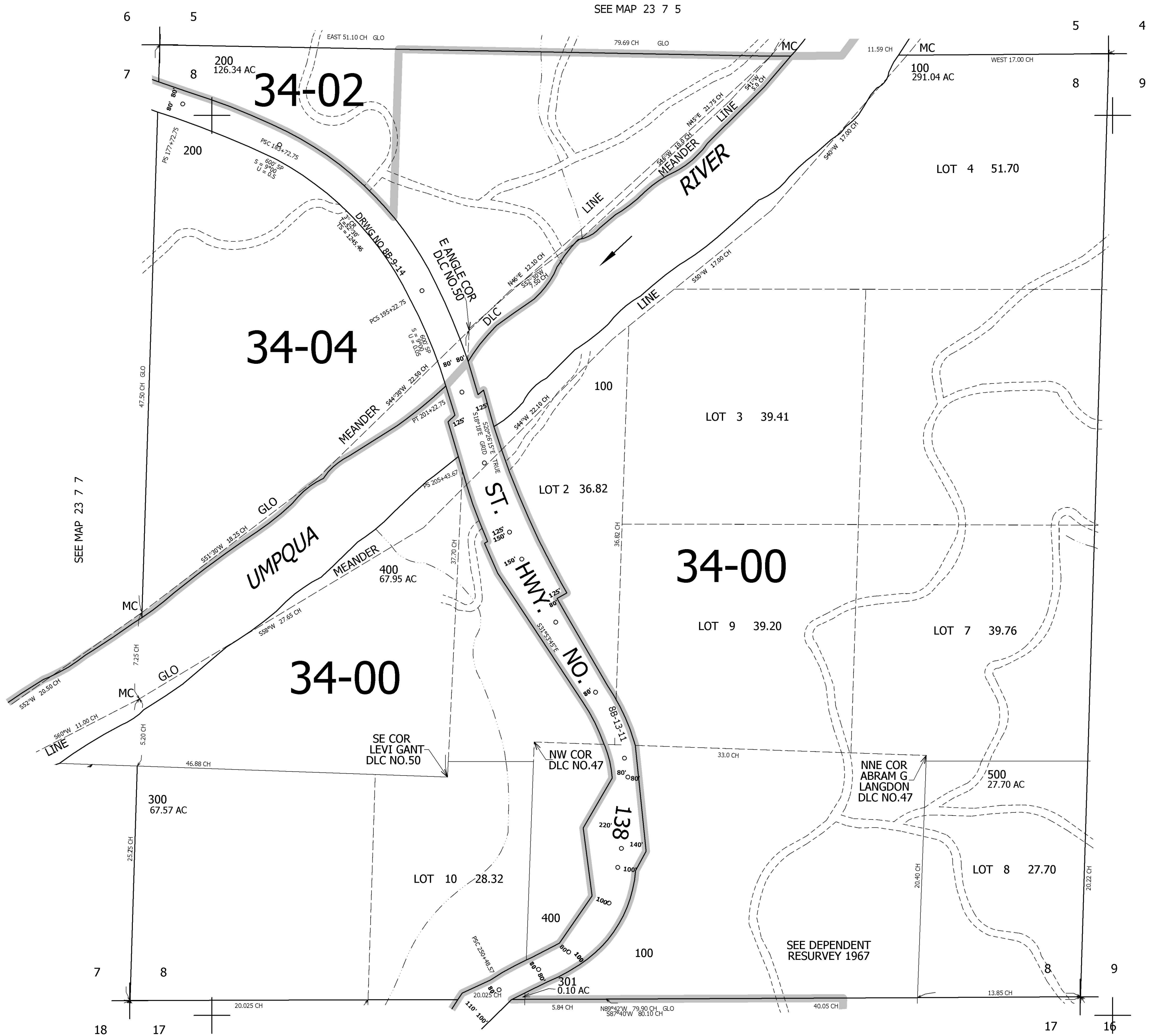


THIS MAP WAS PREPARED FOR ASSESSMENT PURPOSE ONLY.

SEC.8 T.23S. R.7W. W.M.  
DOUGLAS COUNTY  
1" = 400'

REVISED ON  
2-27-03

23 7 8



SEE MAP 23 7 5

SEE MAP 23 7 7

SEE MAP 23 7 9

SEE MAP 23 7 17

CANCELLED NOS  
300M1 101 401

711,000

4,115,000

23 7 8