

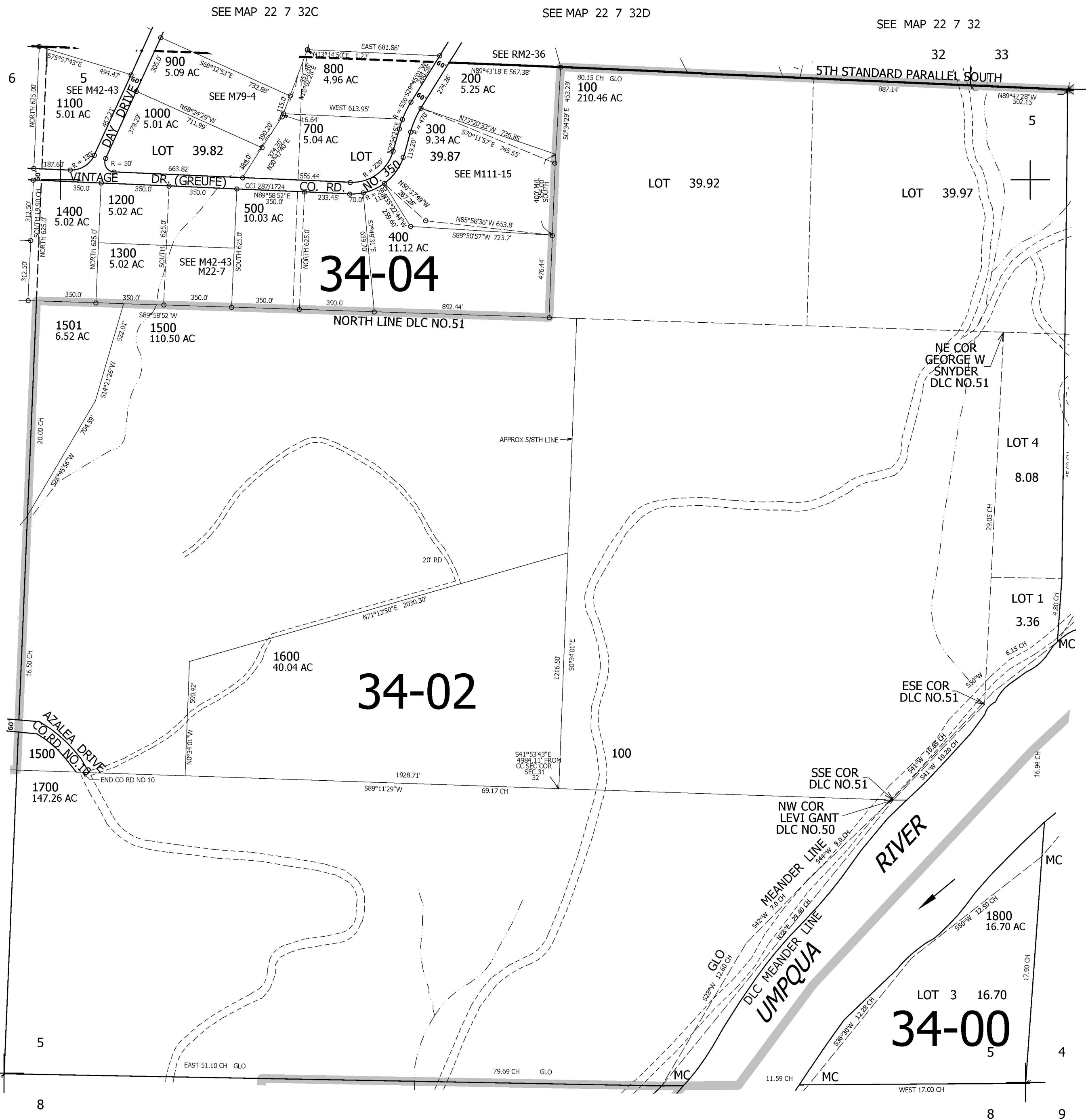
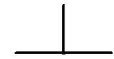
THIS MAP WAS PREPARED FOR ASSESSMENT PURPOSE ONLY.

SEC.5 T.23S. R.7W. W.M.
DOUGLAS COUNTY
1" = 400'

REVISED ON
5-26-09

23 7 5

31 32



SEE MAP 23 7 6

SEE MAP 23 7 4

6

7



SEE MAP 23 7 8

8

9

4,115,000

716,000

23 7 5

CANCELLED NOS
600