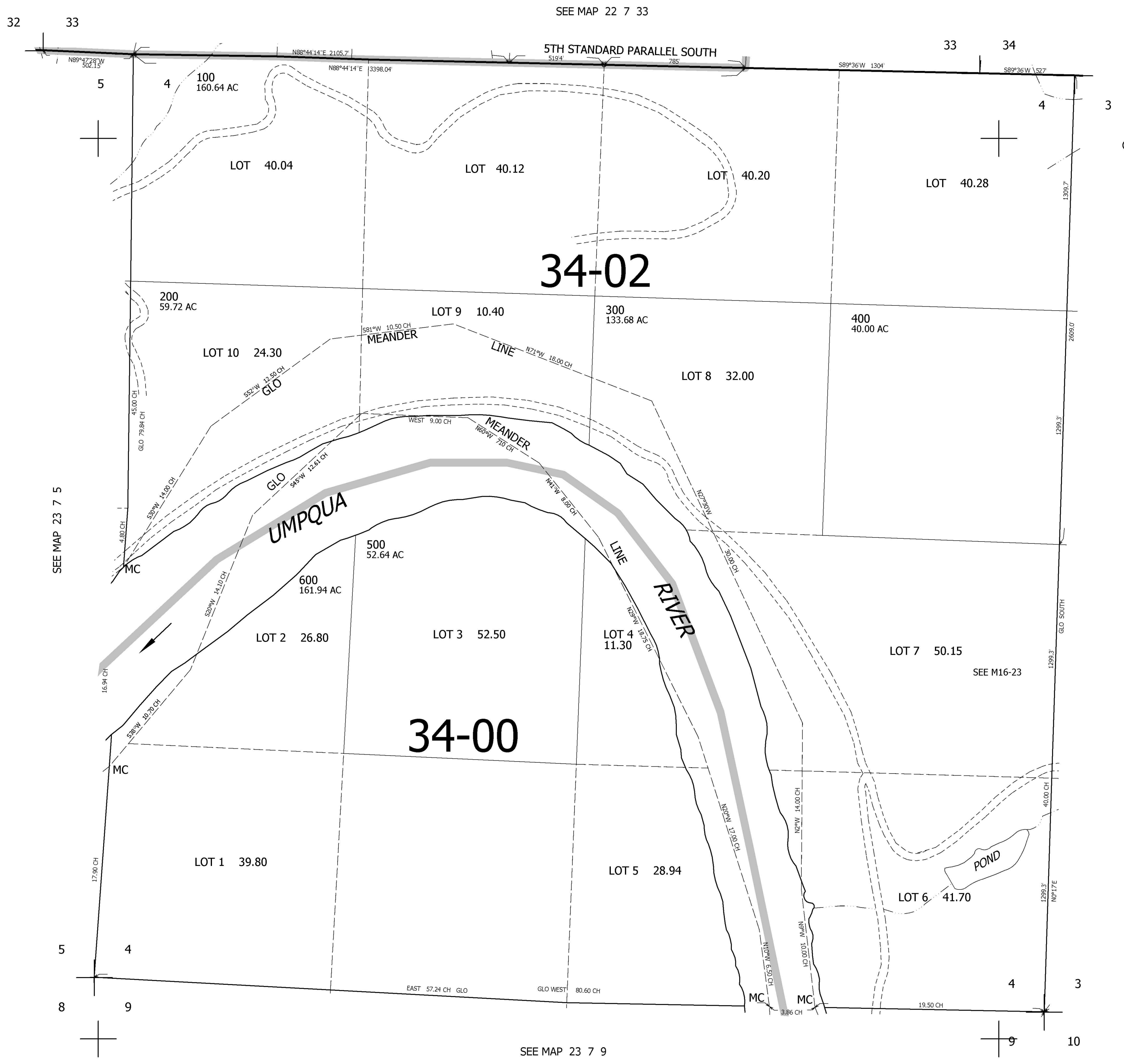


THIS MAP WAS PREPARED FOR ASSESSMENT PURPOSE ONLY.

SEC.4 T.23S. R.7W. W.M.  
DOUGLAS COUNTY  
1" = 400'

REVISED ON

23 7 4



CANCELLED NOS

SEE MAP 23 7 5

SEE MAP 23 7 3

SEE MAP 23 7 9

716,000

4,120,000

23 7 4