

THIS MAP WAS PREPARED FOR ASSESSMENT PURPOSE ONLY.

SEC.3 T.23S. R.7W. W.M.
DOUGLAS COUNTY
1" = 400'

REVISED ON

23 7 3

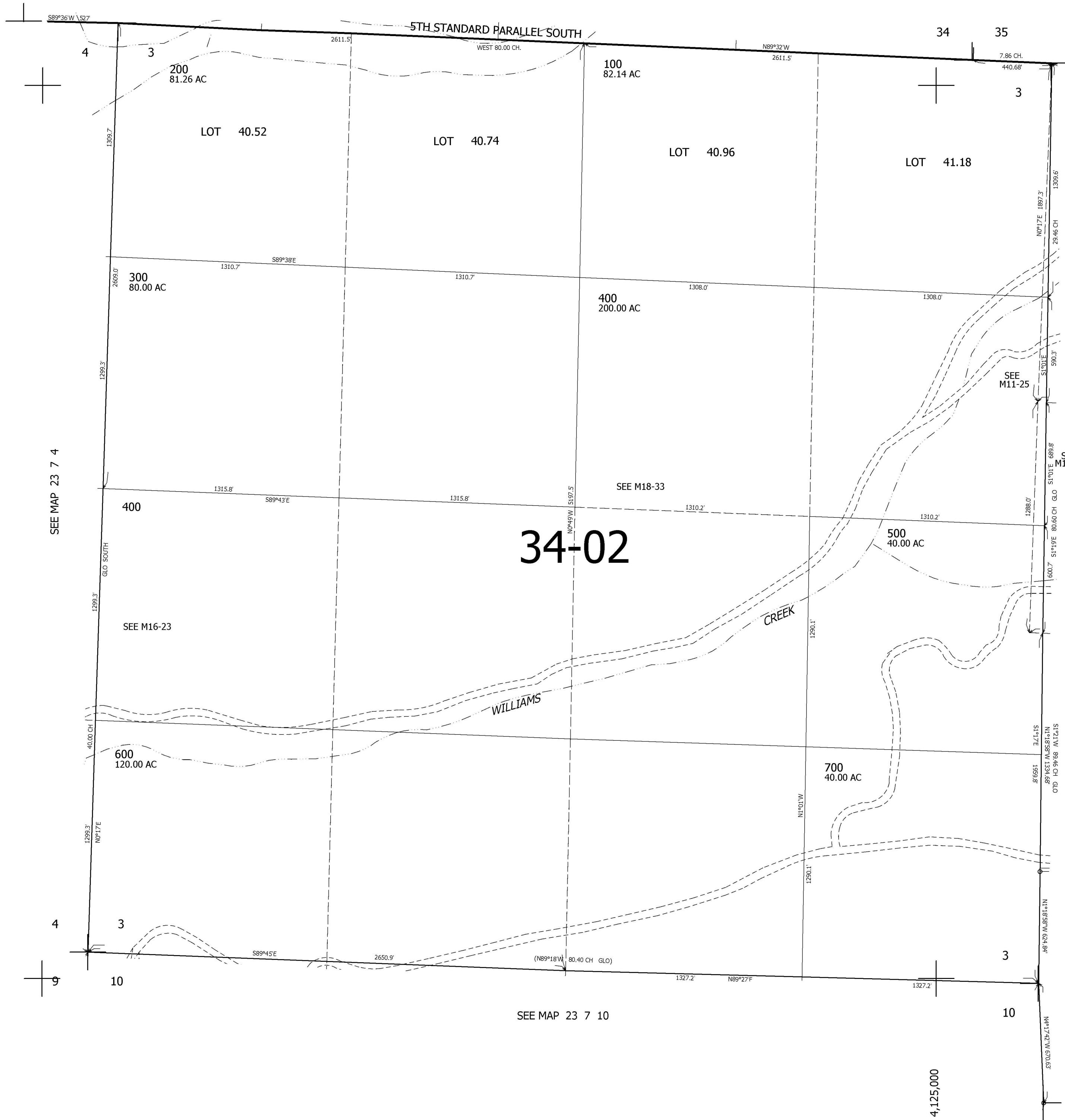
33

34

SEE MAP 22 7 00

34

35



CANCELLED NOS

SEE MAP 23 7 4

SEE MAP 23 7 2

34-02

716,000

SEE MAP 23 7 10

4,125,000

23 7 3

11