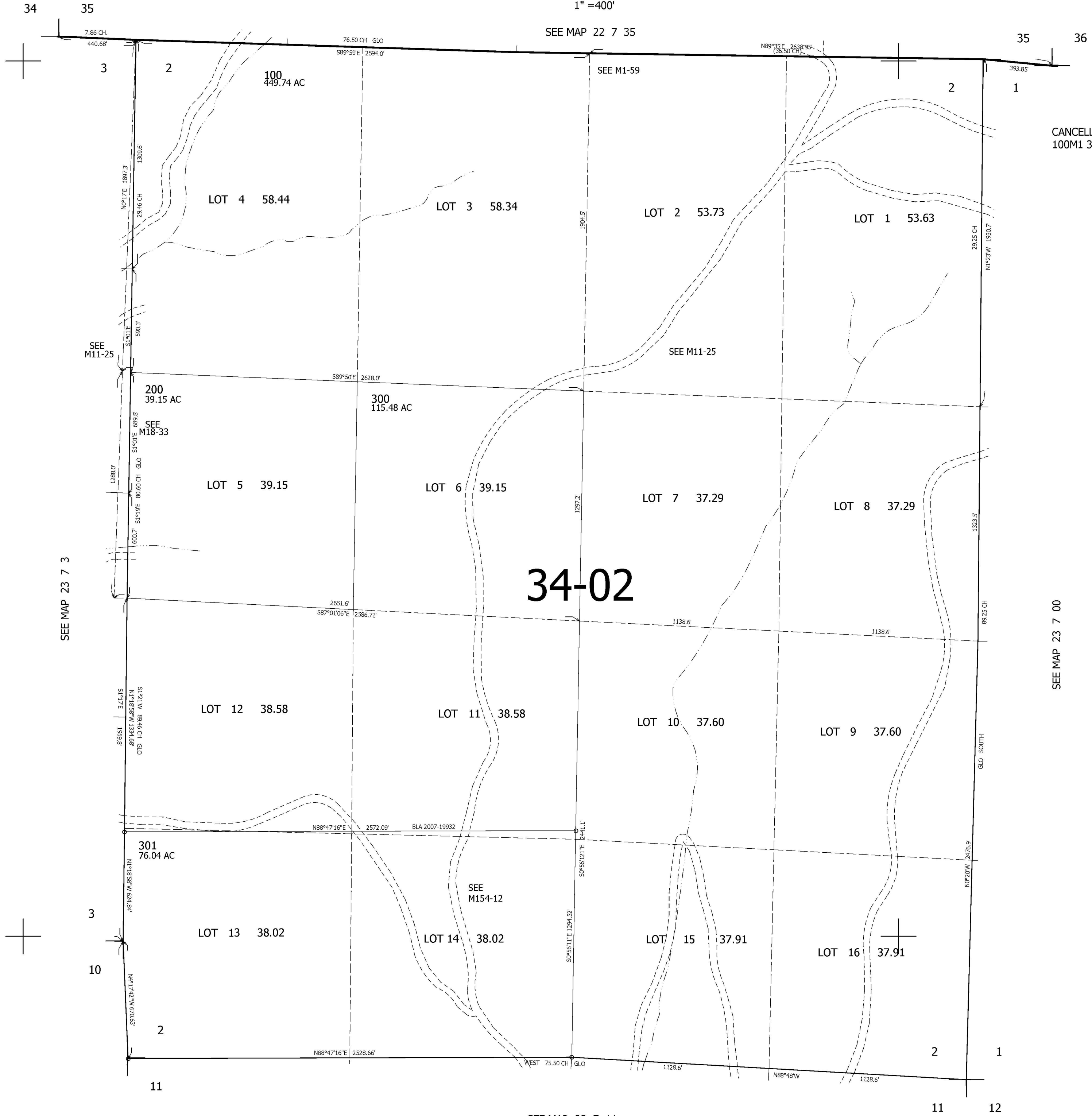


THIS MAP WAS PREPARED FOR ASSESSMENT PURPOSE ONLY.

SEC.2 T.23S. R.7W. W.M.  
DOUGLAS COUNTY  
1" = 400'

REVISED ON  
1-14-08

23 7 2



CANCELLED NOS  
100M1 302 303

34-02

716,000

4,130,000

23 7 2