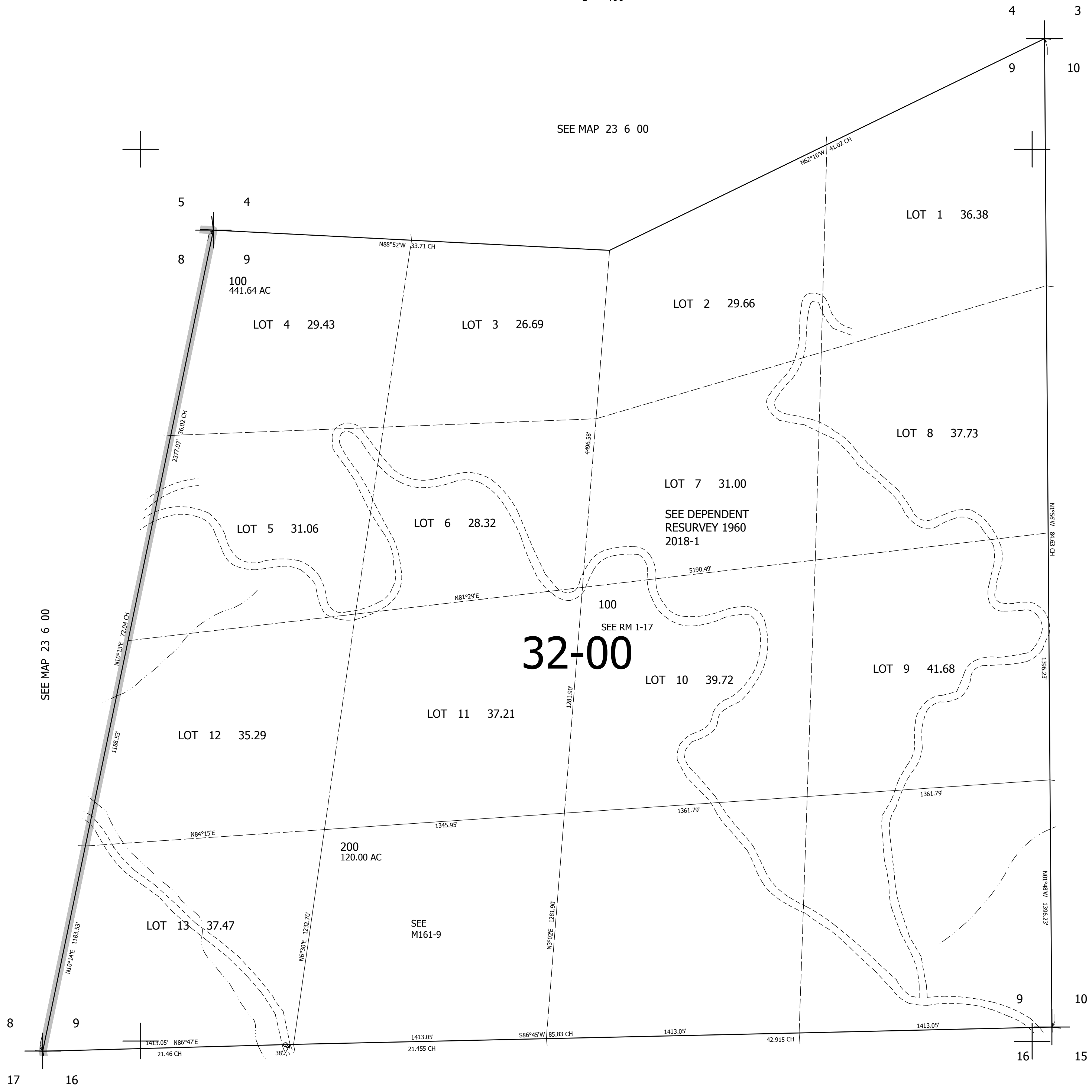


THIS MAP WAS PREPARED FOR ASSESSMENT PURPOSE ONLY.

SEC.9 T.23S. R.6W. W.M.
DOUGLAS COUNTY
1" = 400'

REVISED ON

23 6 9



CANCELLED NOS

SEE MAP 23 6 00

SEE MAP 23 6 00

SEE MAP 23 6 00

32-00

SEE MAP 23 6 16

709,000

4,152,000

23 6 9