

THIS MAP WAS PREPARED FOR ASSESSMENT PURPOSE ONLY.

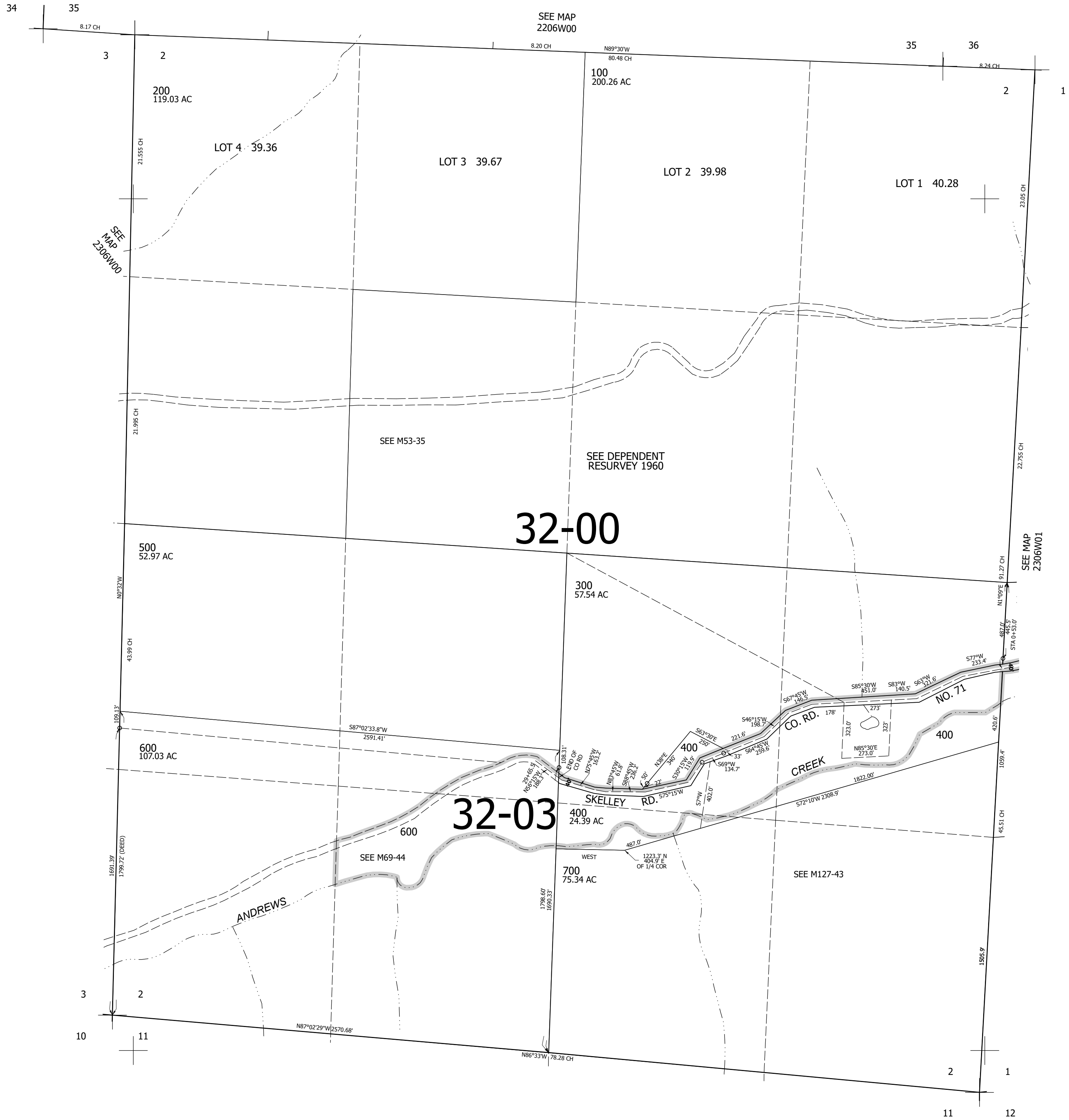
Upper Left:
123°23'32"W 43°36'26"N
4155423E 720410N ft

SEC.02 T.23S. R.06W. W.M.
DOUGLAS COUNTY
1" = 400'

Date Exported 2024-02-20

230602

CANCELLED NOS:
300M1 500M1 600M1
700M1



230602

Lower Right:
123°21'42"W 43°35'20"N
4163272E 713455N ft