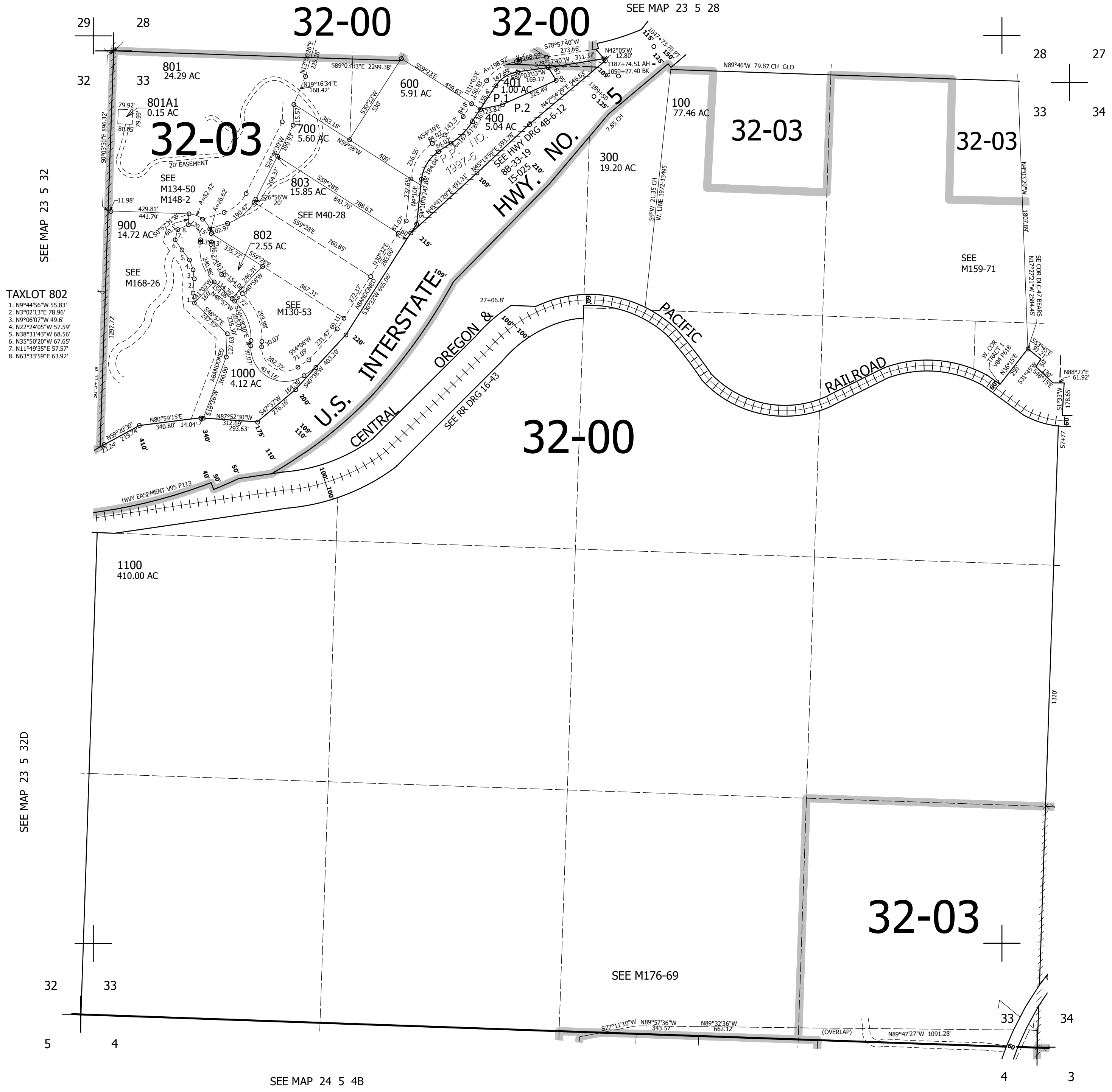


THIS MAP WAS PREPARED FOR ASSESSMENT PURPOSE ONLY.

SEC.33 T.23S. R.5W. W.M.
DOUGLAS COUNTY
1" = 400'

REVISED ON
8-14-17

23 5 33



TAXLOT 802

1. N9°44'56"W 55.83'
2. N3°02'13"E 78.96'
3. N9°06'07"W 49.6'
4. N22°24'05"W 57.59'
5. N38°31'43"W 68.56'
6. N35°50'20"W 67.65'
7. N11°49'35"E 57.57'
8. N63°33'59"E 63.92'

CANCELLED NOS
501 100M1 200M1
804 502 503 500
800 101 200
901

SEE MAP 23 5 34

SEE MAP 23 5 32D

SEE MAP 24 5 4B

SEE MAP 24 5 4A

688,000

4,182,000

23 5 33