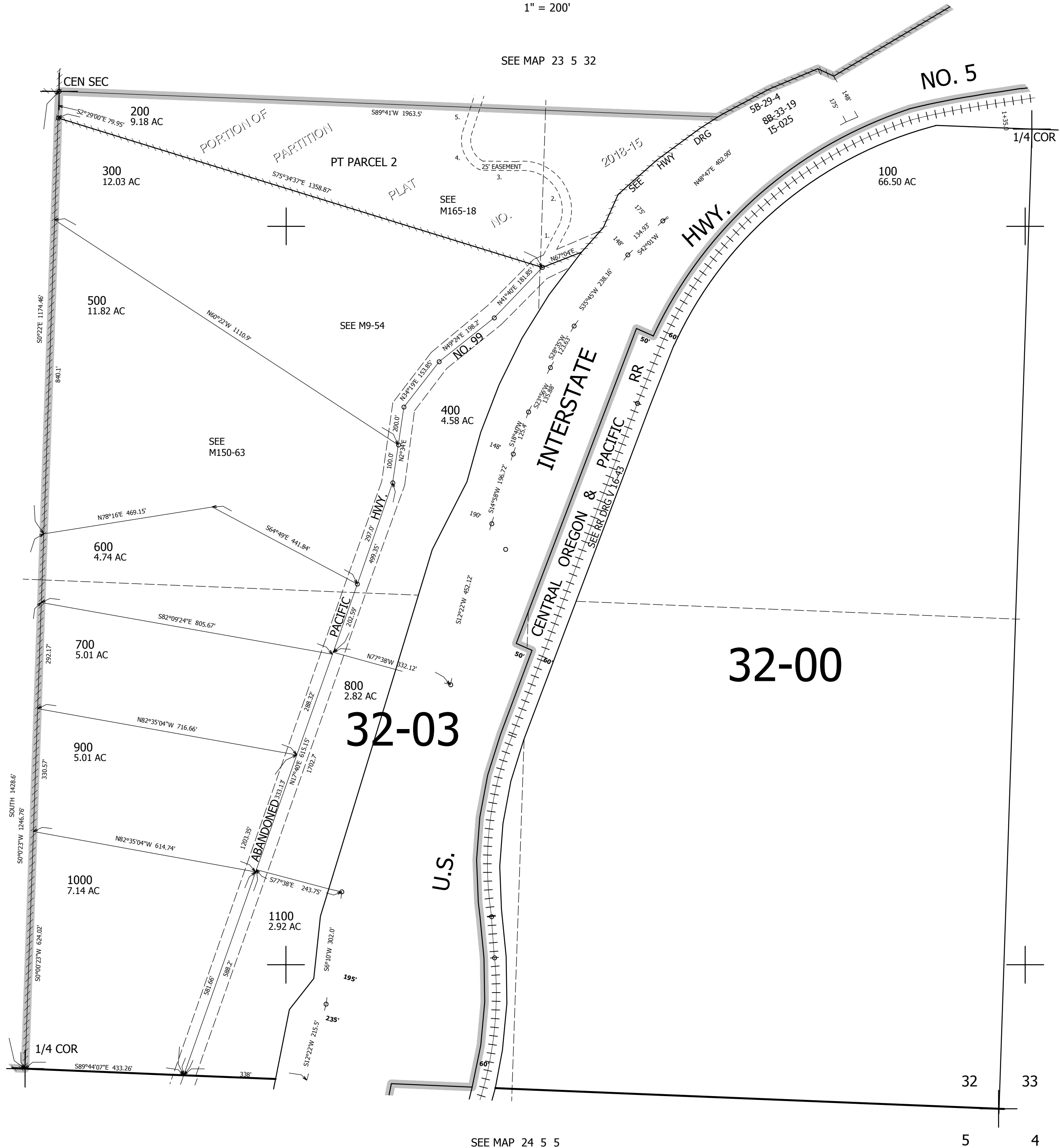


THIS MAP WAS PREPARED FOR ASSESSMENT PURPOSE ONLY.

SE1/4 SEC.32 T.23S. R.5W. W.M.  
DOUGLAS COUNTY  
1" = 200'

REVISED ON  
6-5-18

23 5 32D



CANCELLED NOS

C/L 25' EASEMENT PER  
P. P. 2018-15

1. N33°44'23"E 106.23'
2. A=245.01' R=120.00'  
LC= N40°52'06"W 204.62'
3. S89°12'47"W 92.99'
4. A=107.64' R=75.00'  
LC= N25°35'00"E 98.63'
5. N16°35'37"E 157.65'

SEE MAP 23 5 32

SEE MAP 23 5 33

SEE MAP 24 5 5

4,175,000

688,000

23 5 32D