

THIS MAP WAS PREPARED FOR ASSESSMENT PURPOSE ONLY.

SEC.32 T.23S. R.5W. W.M.  
DOUGLAS COUNTY  
1" = 400'

REVISED ON  
6-5-18

23 5 32  
& INDEX

SEE MAP 23 5 29

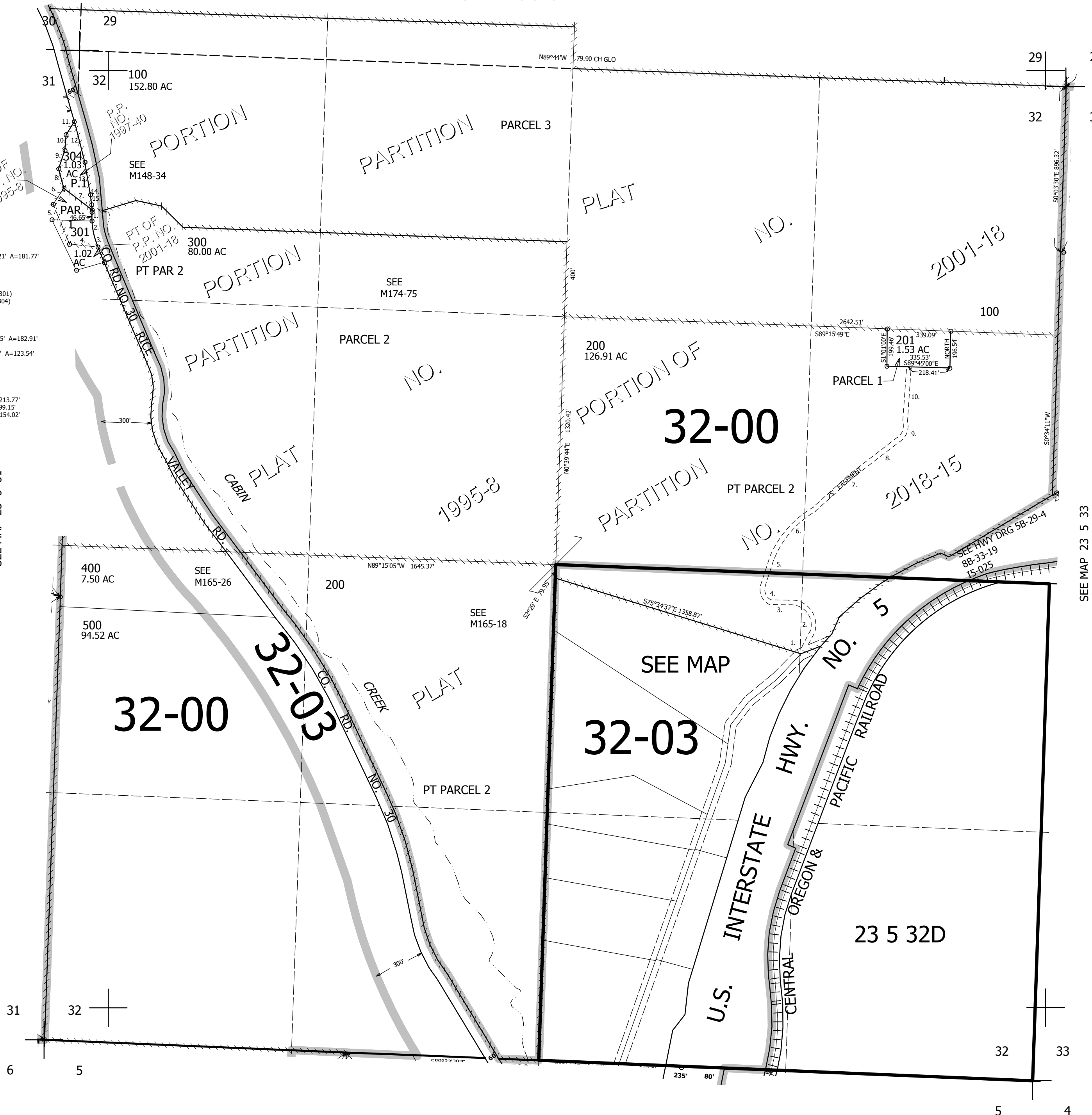
P.P. 1997-40 &  
P.P. 1995-8

1. N0°50'06"E 12.54'
2. LC=N12°13'32"W 180.21' A=181.77'
3. S25°17'10"E 19.82'
4. S88°33'34"E 151.88'
5. S23°44'43"E 237.21'
6. S29°47'33"W 104.63'
7. N54°46'09"W 182.32' (301)  
N54°42'32"W 182.80' (304)
8. N10°14'40"W 108.27'
9. N32°24'45"E 103.45'
10. N9°13'04"E 83.50'
11. N36°43'56"E 82.39'
12. LC=S11°08'09"E 185.75' A=182.91'
13. S7°01'46"E 95.63'
14. LC=S2°26'27"E 123.41' A=123.54'
15. S2°08'53"W 50.45'

PARCEL 301

NORTH LINE S88°35'31"W 213.77'  
WEST LINE S29°04'03"E 299.15'  
SOUTH LINE N71°06'33"E 154.02'

SEE MAP 23 5 31



CANCELLED NOS  
302 303 305  
501

C/L 25' EASEMENT PER  
P.P. 2018-15

1. N33°44'23"E 106.23'
2. A=245.01' R=120.00'  
LC= N40°52'06"W 204.62'
3. S89°12'47"W 92.99'
4. A=107.64' R=75.00'  
LC=N25°35'00"W 98.63'
5. N16°35'37"E 157.65'
6. A=349.63' R=540.00'  
LC N39°54'33"E 343.56'
7. N46°34'28"E 266.74'
8. N50°53'32"E 313.15'
9. A=105.30' R=85.00'  
LC=N20°34'54"E 98.70'
10. N2°28'30"E 298.20'

SEE MAP 23 5 33

688,000

SEE MAP 24 5 5

23 5 32  
& INDEX

4,177,000