

THIS MAP WAS PREPARED FOR ASSESSMENT PURPOSE ONLY.

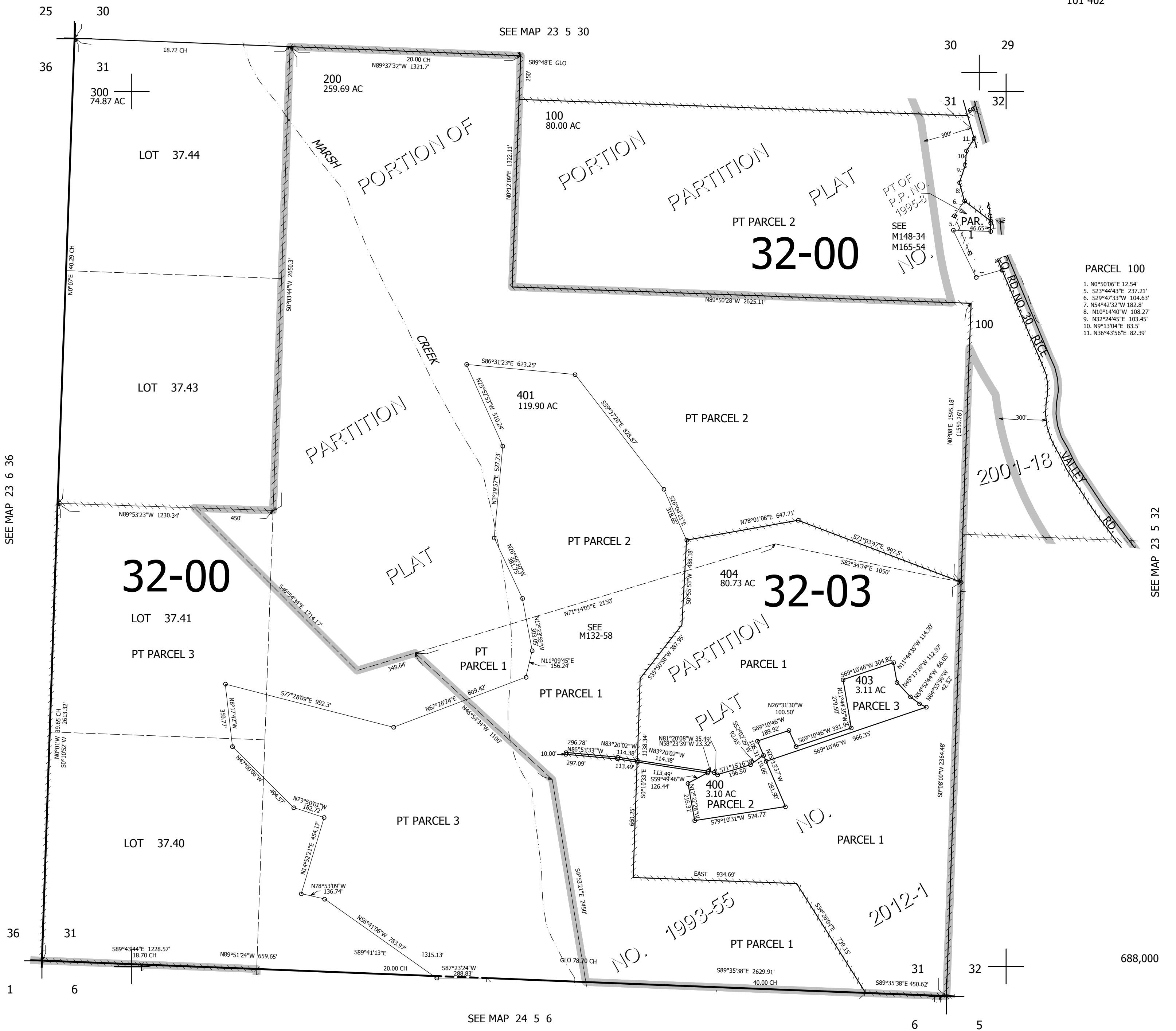
SEC.31 T.23S. R.5W. W.M. DOUGLAS COUNTY

REVISED ON 1-18-12

23 5 31

1" = 400'

CANCELLED NOS 101 402



- PARCEL 100
1. N0°50'06"E 12.54'
 5. S23°44'43"E 237.21'
 6. S29°47'33"W 104.63'
 7. N54°42'32"W 182.8'
 8. N10°1'44"W 108.27'
 9. N32°24'45"E 103.45'
 10. N9°13'04"E 83.5'
 11. N36°43'56"E 82.39'

SEE MAP 23 6 36

SEE MAP 23 5 32

SEE MAP 24 5 6

4,172,000

688,000

23 5 31