

THIS MAP WAS PREPARED FOR ASSESSMENT PURPOSE ONLY.

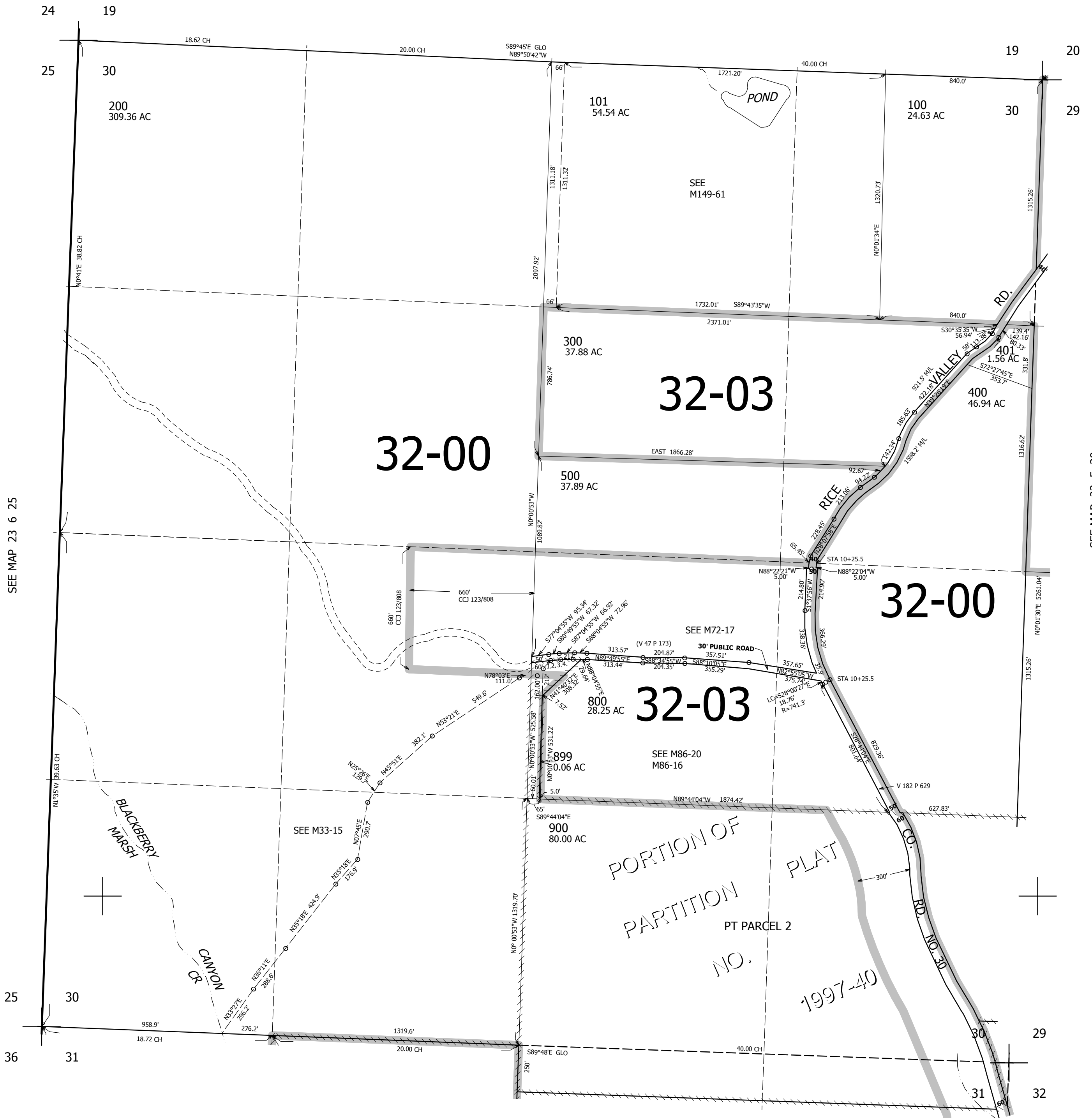
SEC.30 T.23S. R.5W. W.M.
DOUGLAS COUNTY

1" = 400'

REVISED ON
3-10-17

23 5 30

SEE MAP 23 5 00



CANCELLED NOS
600 700 902
901 301

SEE MAP 23 6 25

SEE MAP 23 5 29

PARCEL 900
1. N38°54'44"E 77.77'
2. N80°49'55"E 54.31'
3. N87°04'55"E 65.23'
4. N88°04'55"E 42.46'

PORTION OF
PARTITION
PLAT
NO. 1997-40
PT PARCEL 2

694,000

SEE MAP 23 5 00

23 5 30

4,172,000