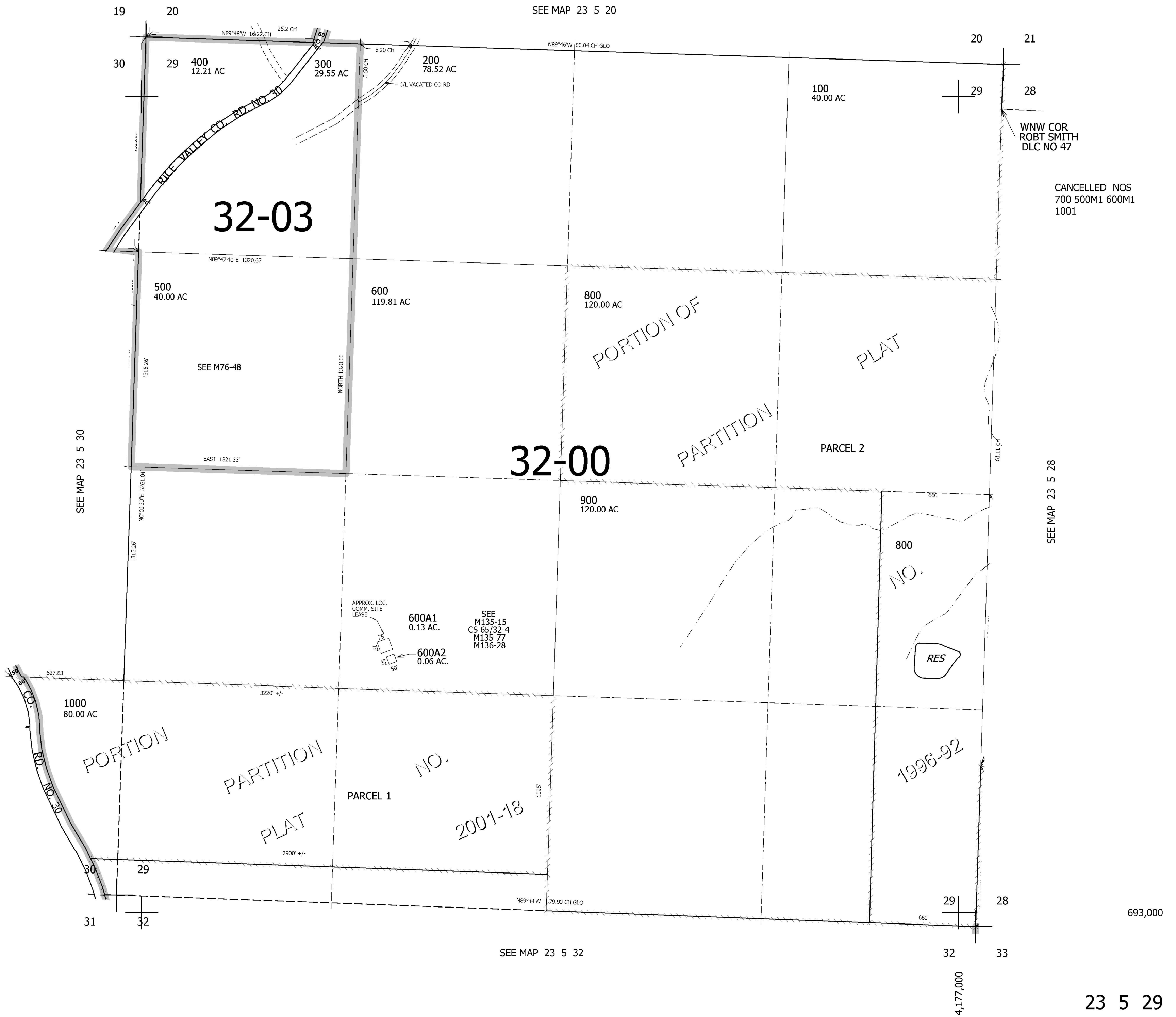


THIS MAP WAS PREPARED FOR ASSESSMENT PURPOSE ONLY.

SEC.29 T.23S. R.5W. W.M.  
DOUGLAS COUNTY  
1" = 400'

REVISED ON  
7-31-01

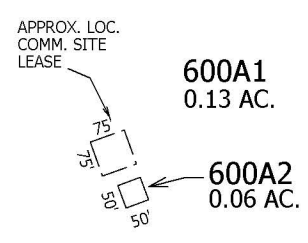
23 5 29



WNW COR.  
ROBT SMITH  
DLC NO 47

CANCELLED NOS  
700 500M1 600M1  
1001

SEE  
M135-15  
CS 65/32-4  
M135-77  
M136-28



RES

693,000

23 5 29