

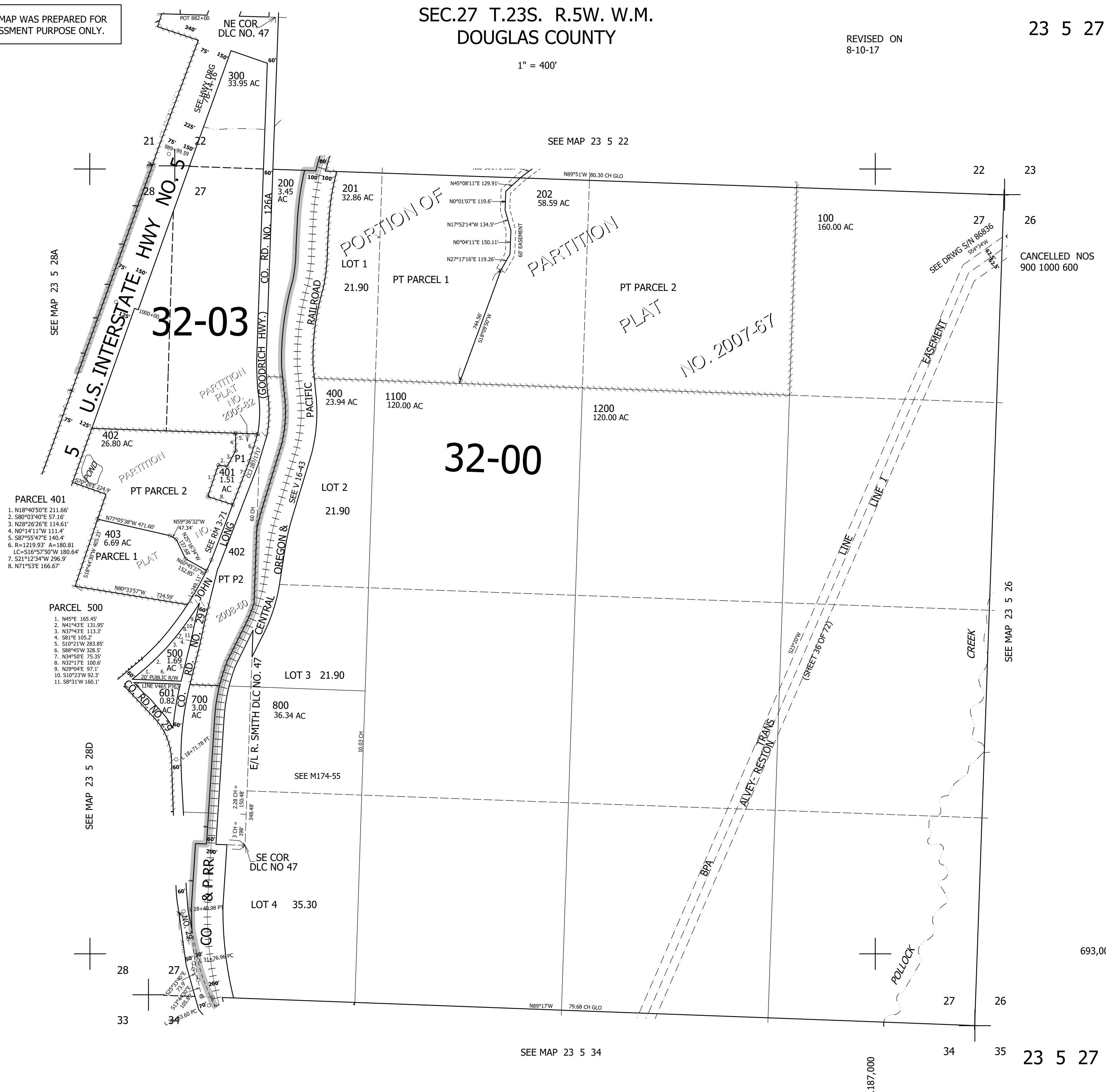
THIS MAP WAS PREPARED FOR ASSESSMENT PURPOSE ONLY.

SEC.27 T.23S. R.5W. W.M. DOUGLAS COUNTY

REVISED ON
8-10-17

23 5 27

1" = 400'



- PARCEL 401**
1. N18°40'50"E 211.66'
 2. S80°03'40"E 57.16'
 3. N28°26'26"E 114.61'
 4. N0°14'11"W 111.4'
 5. S87°55'47"E 140.4'
 6. R=1219.93' A=180.81
 7. LC=S16°57'50"W 180.64'
 8. N71°53'E 166.67'

- PARCEL 500**
1. N45°E 165.45'
 2. N41°43'E 131.95'
 3. N37°43'E 113.3'
 4. S81°E 105.2'
 5. S10°21'W 283.85'
 6. S88°45'W 328.5'
 7. N34°50'E 75.35'
 8. N32°17'E 100.6'
 9. N29°04'E 97.1'
 10. S10°23'W 92.3'
 11. S8°31'W 160.1'

CANCELLED NOS
900 1000 600

693,000

SEE MAP 23 5 34

SEE MAP 23 5 26

SEE MAP 23 5 28A

SEE MAP 23 5 28D

4,187,000

23 5 27