

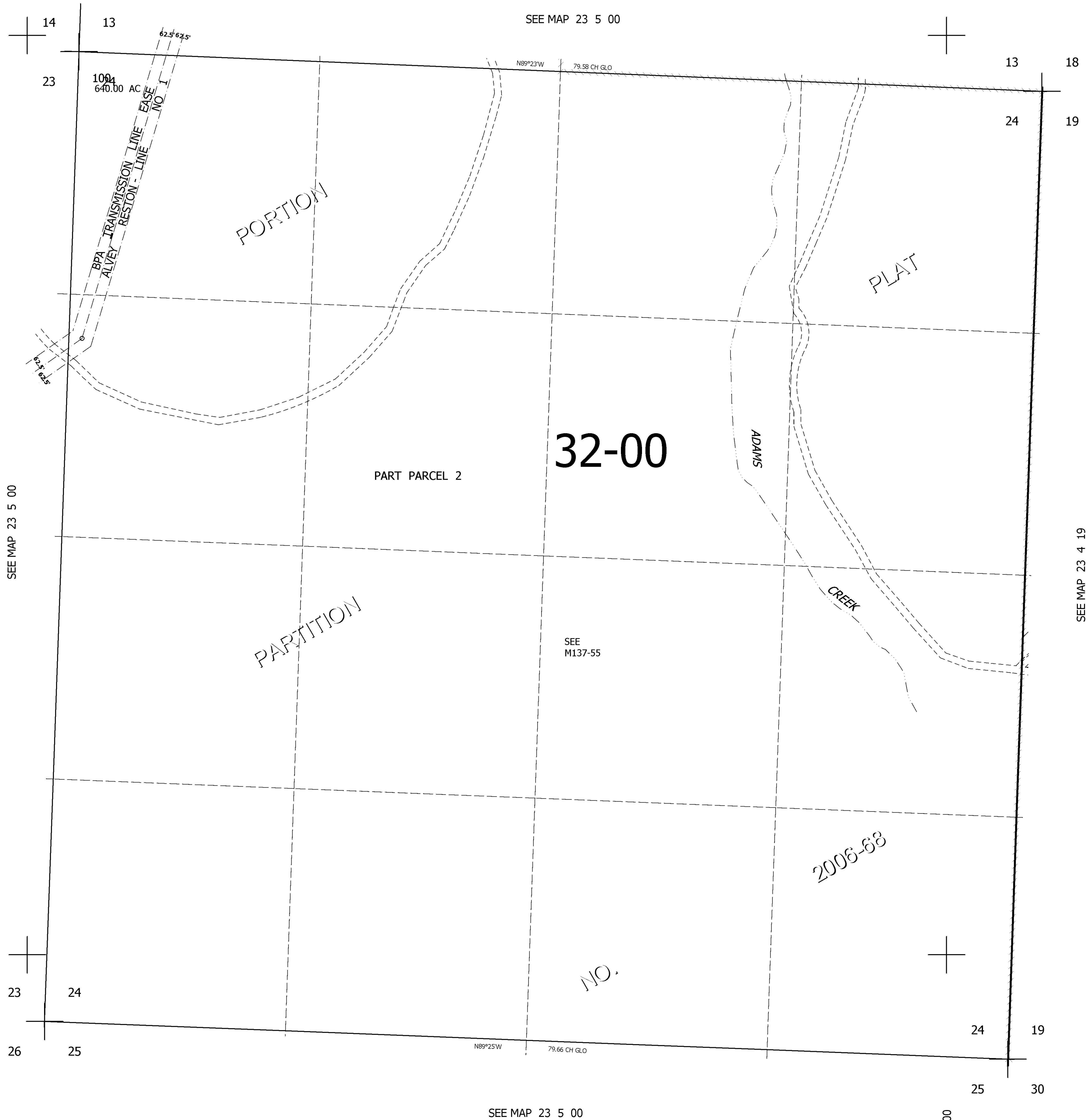
THIS MAP WAS PREPARED FOR ASSESSMENT PURPOSE ONLY.

SEC.24 T.23S. R.5W. W.M.
DOUGLAS COUNTY

REVISED ON
8-8-06

23 5 24

1" = 400'



CANCELLED NOS
200 300 400

698,000

SEE MAP 23 5 00

23 5 24