

THIS MAP WAS PREPARED FOR ASSESSMENT PURPOSE ONLY.

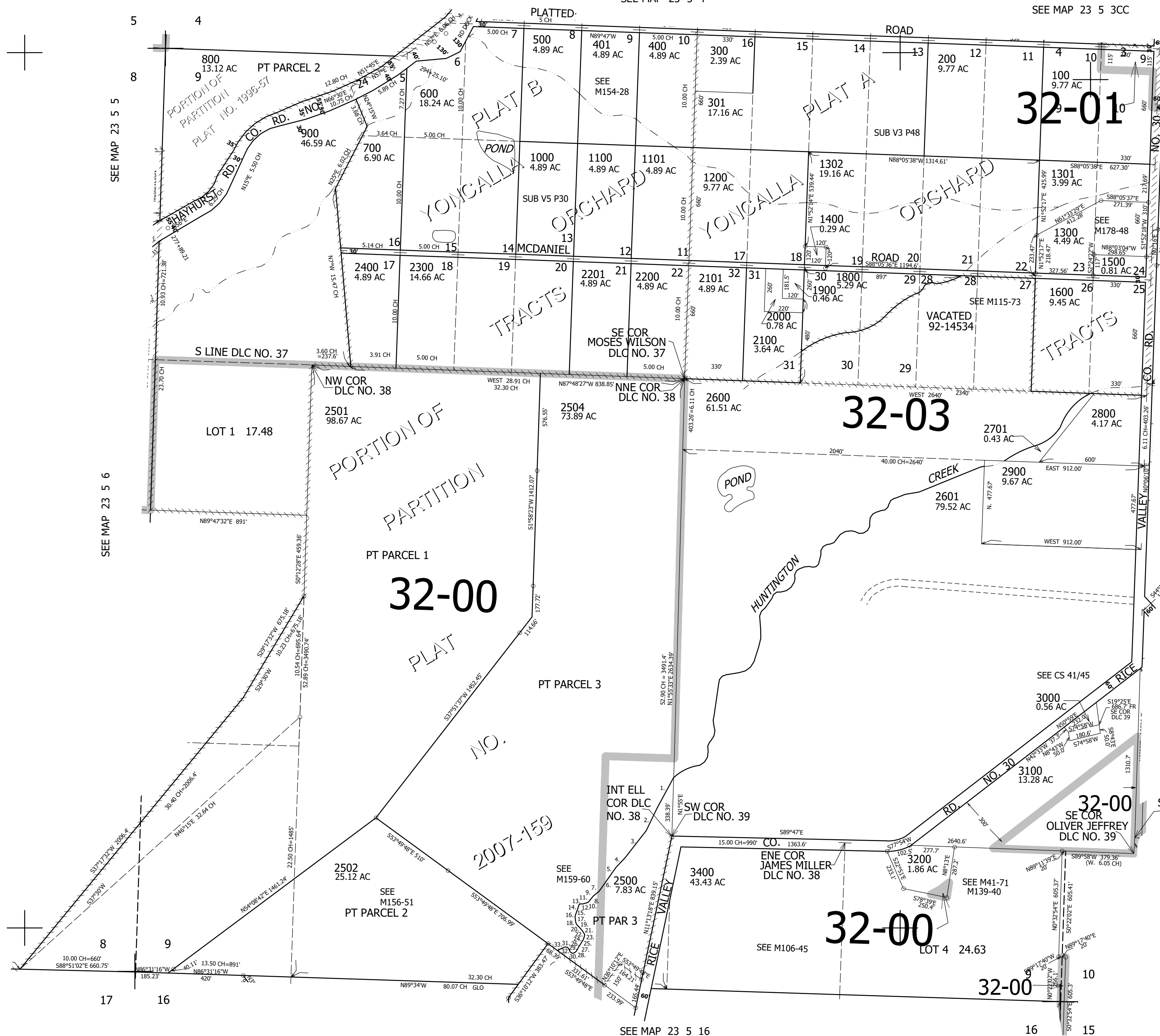
SEC.9 T.23S. R.5W. W.M. DOUGLAS COUNTY 1" = 400'

REVISED ON 12-13-21

23 5 9 YONCALLA

SEE MAP 23 5 4

SEE MAP 23 5 3CC



CANCELLED NOS 1700 2700 3300 3401 2503 2200A1

SEE MAP 23 5 10

TAXLOT 2500

1. S28°29'55"W 196.44'
2. S25°54'36"W 146.05'
3. S37°57'28"W 198.56'
4. S43°27'42"W 74.59'
5. S35°19'32"W 106.24'
6. S50°42'36"W 42.55'
7. S38°31'00"W 33.54'
8. S40°12'38"W 13.93'
9. S74°16'42"W 32.34'
10. S86°32'43"E 12.43'
11. S61°04'18"W 9.51'
12. S17°13'17"W 27.22'
13. S19°56'44"W 36.1'
14. S13°47'05"W 8.78'
15. S6°27'07"E 30.49'
16. S19°16'41"E 14.83'
17. S44°07'24"E 24.26'
18. S40°53'34"E 24.13'
19. S31°48'05"E 26.5'
20. S8°50'59"W 9.96'
21. S18°19'56"W 19.42'
22. S31°54'28"W 55.75'
23. S27°43'12"W 20.1'
24. S47°18'58"W 15.99'
25. S77°15'47"W 12.57'
26. S57°29'16"E 14.02'
27. S26°29'11"E 16.64'
28. S29°10'28"E 7.57'
29. S52°26'34"E 10.52'
30. S85°06'47"E 12.28'
31. S66°00'51"W 24.94'
32. S59°24'55"W 16.49'
33. S52°44'06"W 4.59'

709,000

23 5 9 YONCALLA

SEE MAP 23 5 5

SEE MAP 23 5 6

SEE MAP 23 5 16

SEE MAP 23 5 15

4,182,000