

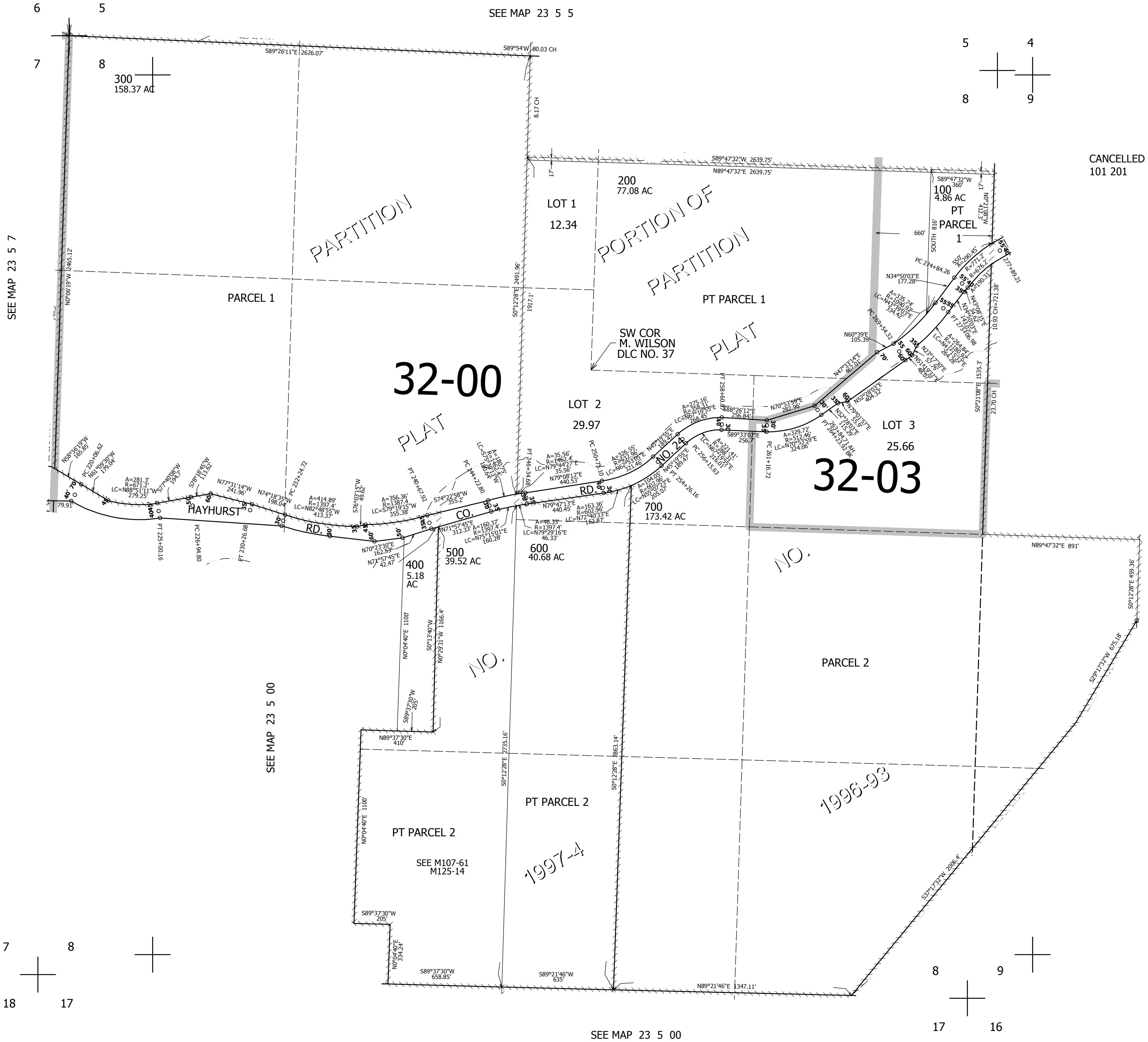
THIS MAP WAS PREPARED FOR ASSESSMENT PURPOSE ONLY.

SEC.8 T.23S. R.5W. W.M. DOUGLAS COUNTY

1" = 400'

REVISED ON 3-1-12

23 5 8



SEE MAP 23 5 7

SEE MAP 23 5 5

CANCELLED NOS 101 201

SEE MAP 23 5 9

709,000

SEE MAP 23 5 00

4,178,000

23 5 8