

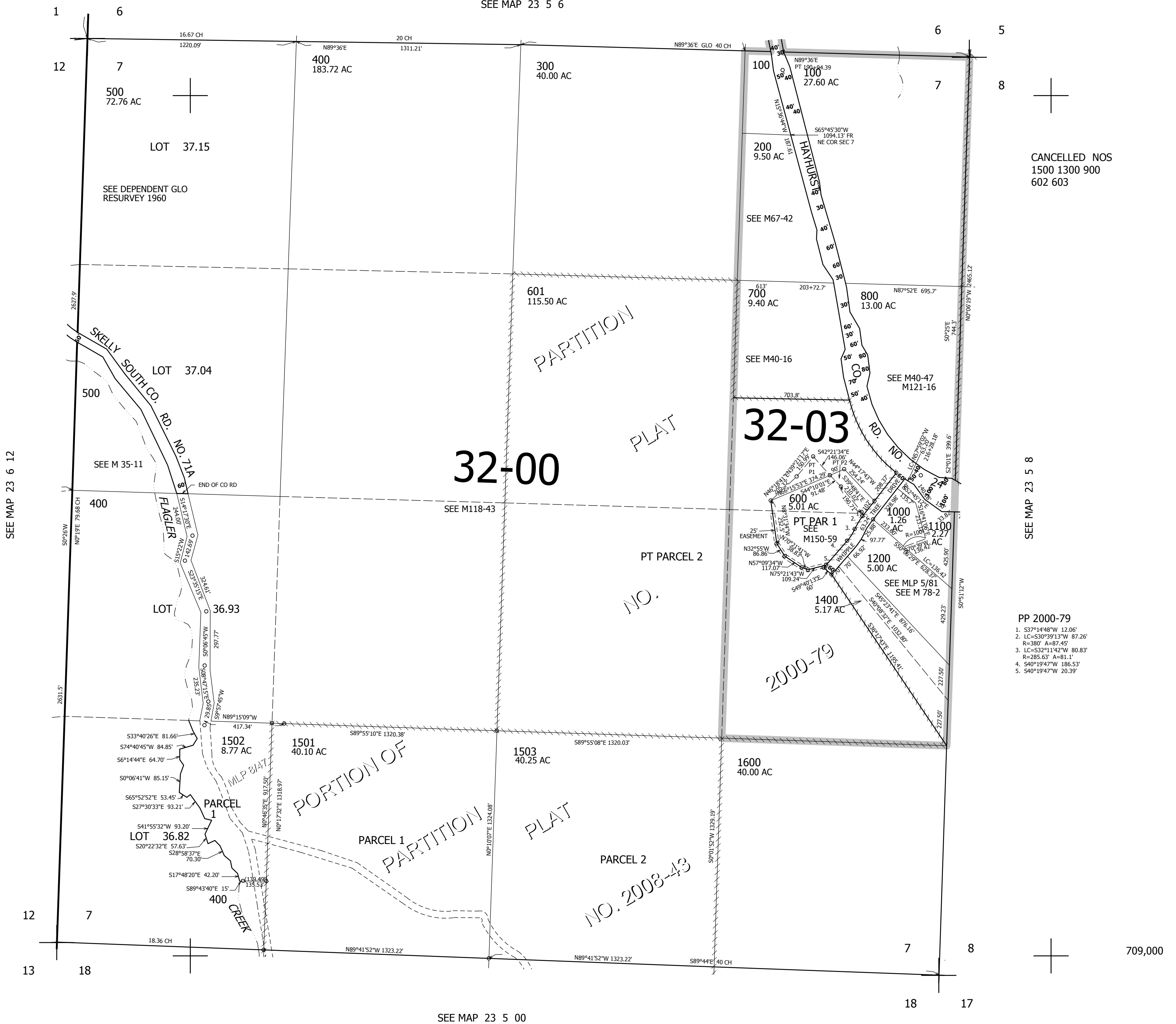
THIS MAP WAS PREPARED FOR ASSESSMENT PURPOSE ONLY.

SEC.7 T.23S. R.5W. W.M.
DOUGLAS COUNTY
1" = 400'

REVISED ON
3-1-12

23 5 7

SEE MAP 23 5 6



- PP 2000-79
- S37°14'48"W 12.06'
 - LC=530°39'13"W 87.26'
 - R=380' A=87.45'
 - LC=532°11'42"W 80.83'
 - R=285.63' A=81.1'
 - S40°19'47"W 186.53'
 - S40°19'47"W 20.39'

709,000

SEE MAP 23 5 00

4,173,000

23 5 7