

THIS MAP WAS PREPARED FOR ASSESSMENT PURPOSE ONLY.

SEC.6 T.23S. R.5W. W.M. DOUGLAS COUNTY

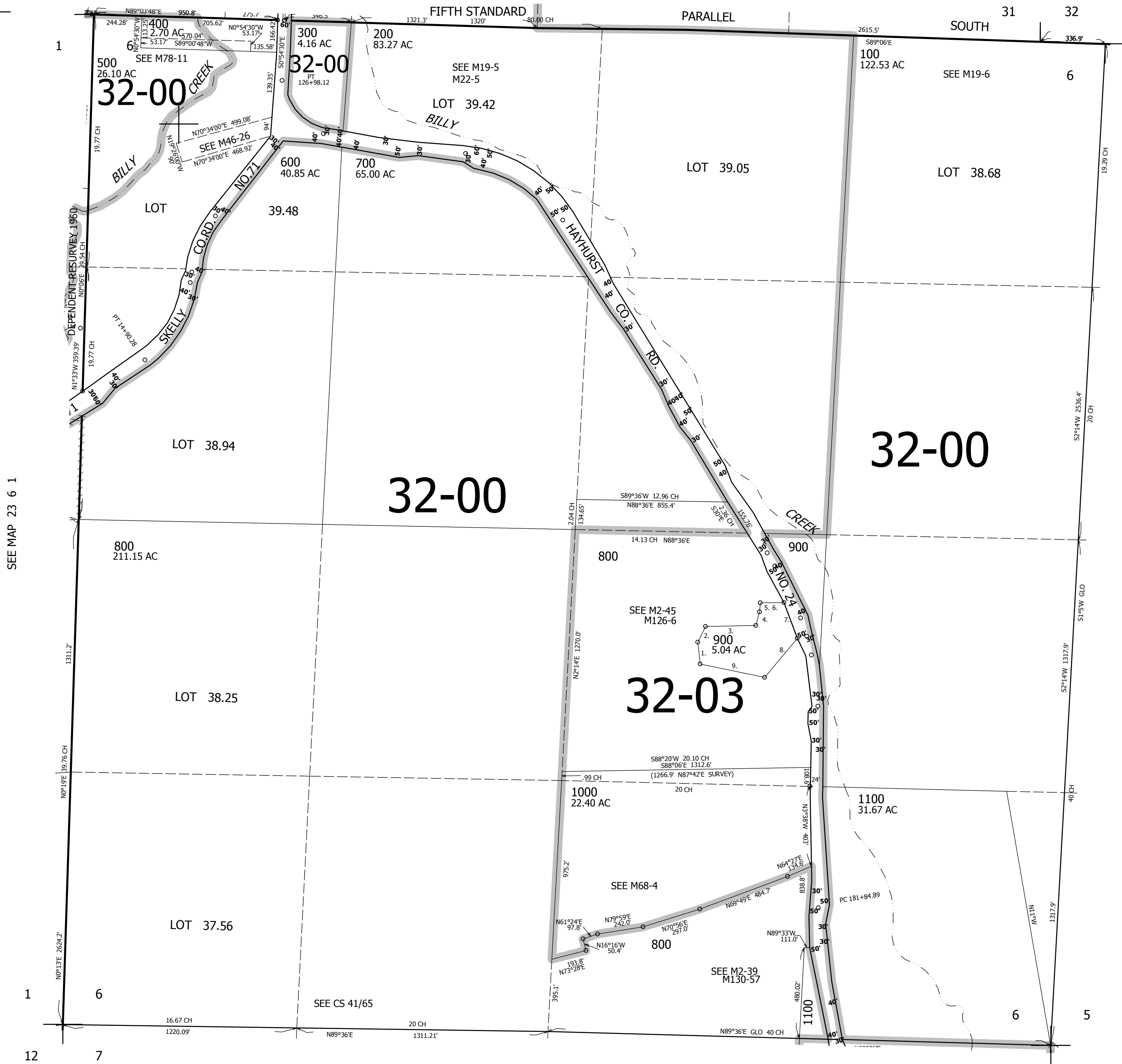
1" = 400'

REVISED ON 3-1-12

23 5 6

36 31

SEE MAP 22 5 31



SEE MAP 23 6 1

SEE MAP 23 5 5

SEE MAP 23 5 7

- PARCEL 900
1. N6°12'50"W 114.29'
 2. N25°13'38"E 90.46'
 3. N88°30'49"E 261.55'
 4. N14°41'38"E 72.70'
 5. N4°40'42"E 47.57'
 6. N89°07'38"E 121.87'
 7. LC=S21°01'09"E 197.47'
R=1382.4'
 8. S39°20'30"W 264.15'
 9. N78°43'35"W 341.77'

CANCELLED NOS 901 501

714,000

4,173,000

23 5 6