

THIS MAP WAS PREPARED FOR ASSESSMENT PURPOSE ONLY.

Upper Left:  
123°17'35"W 43°36'10"N  
4181560E 717924N ft

SE1/4 NE1/4 SEC.04 T.23S. R.05W. W.M.  
DOUGLAS COUNTY  
1" = 100'

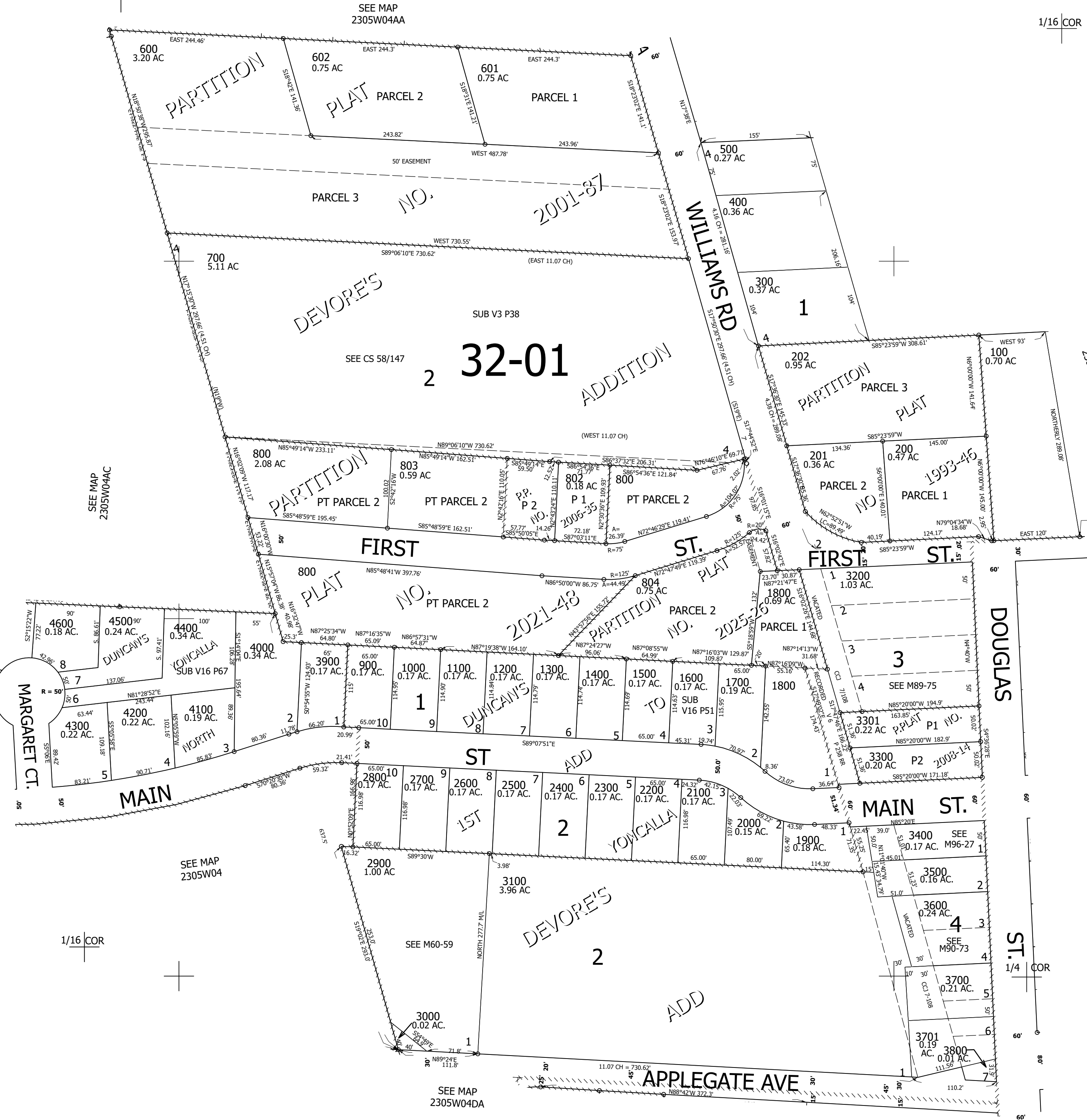
Date Exported 2026-03-30

230504AD

CANCELLED NOS:  
701 801 203  
805 806

1/16 COR

1/16 COR



1/16 COR

1/4 COR

230504AD

Lower Right:  
123°17'8"W 43°35'53"N  
4183537E 716204N ft