

THIS MAP WAS PREPARED FOR ASSESSMENT PURPOSE ONLY.

Upper Left:
123°17'51"W 43°36'12"N
4180385E 718145N ft

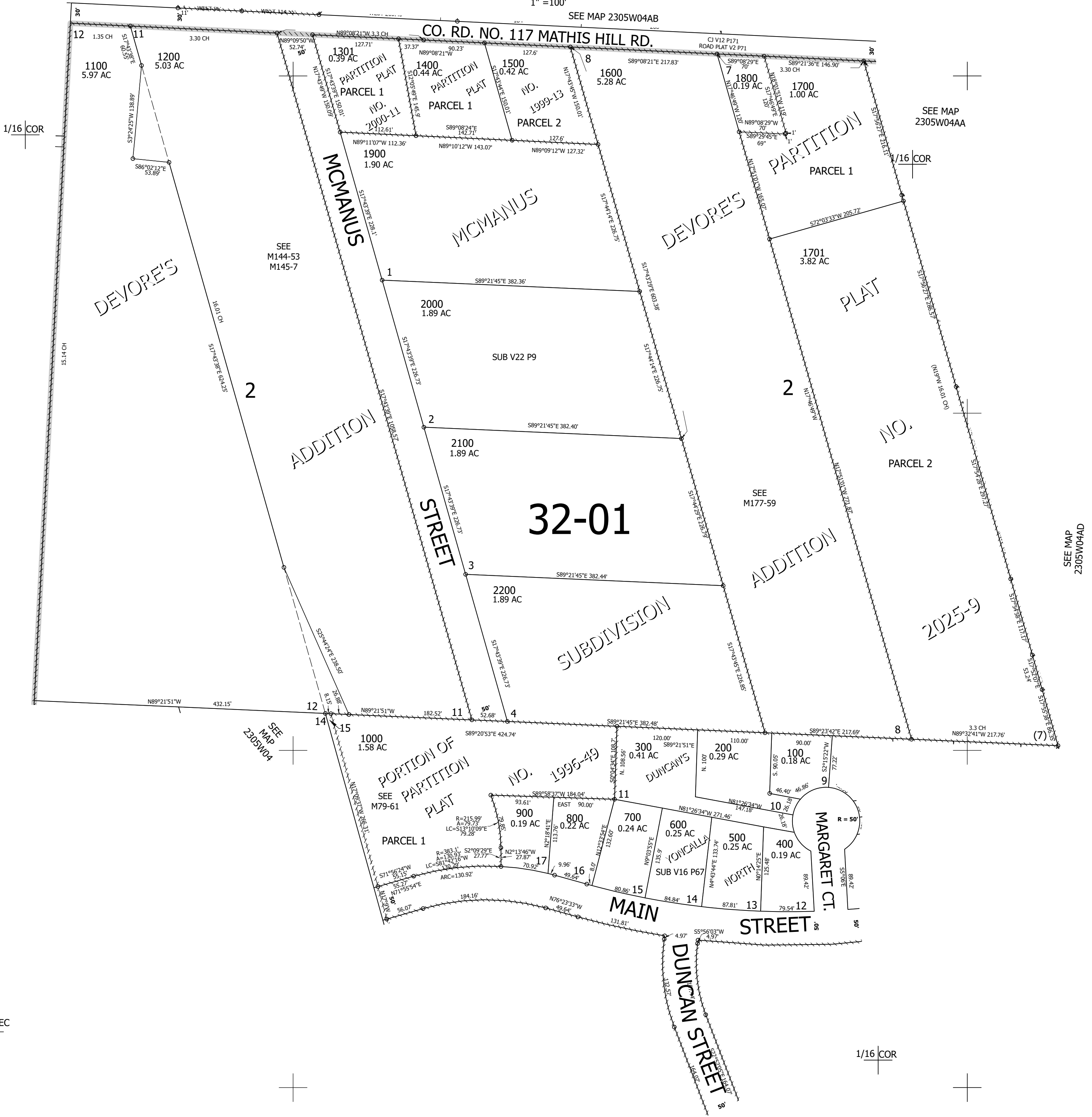
SW1/4 NE1/4 SEC.04 T.23S. R.05W. W.M.
DOUGLAS COUNTY

1" = 100'

Date Exported 2025-03-24

230504AC
Yoncalla

CANCELLED NOS:
1101 1201 1300



CEN | SEC

1/16 COR

230504AC
Yoncalla

Lower Right:
123°17'24"W 43°35'55"N
4182362E 716425N ft